

PRODUCT	Particulate Matter Sensor	SHINYEI KAISHA ELECTRONICS DIVISION ENGINEERING DEPT.	Issued	May 2002
			Rev.1	
			Rev.2	
MODEL NO.	PPD3NS	APPROVED BY:	Rev.3	
		CHECKED BY:	Rev.4	
		DRAWN BY :	Rev.5	

1.Scope

This specification establishes the configuration, performance, test and acceptance requirement

for Particulate Matter Sensor Model PPD3

2.Configuration

The configuration and connector pin allocation are shown in the attached drawing Fig1.

3.Sensor Performance

This sensor is to create Digital (Lo Pulse) output to Particulate Matters(PM).

Lo Pulse Occupancy time (LPO time) is in proportion to PM concentration.

The output from "P1" is for PM whose size is around 1 micro meter or larger.

"P1" Output characteristics is shown in the attached drawing Fig2.,when tested in standard condition stipulated below.

"P2" Output is for bigger sized particles of which size is around 2.5 micro meter or larger ones.

4. Specification

- 4-1. Detectable particle size: approx. 1 μ m (minimum.)
- 4-2. Detectable range of concentration: 0 ~ 53,000 pcs/liter (0 ~ 15,000pcs/0.01 CF)
- 4-3. Supply Voltage: DC5V \pm 10% (CN1:Pin1=GND, Pin3=+5V)
Ripple Voltage within 30mV
- 4-4. Power consumption: 90mA
- 4-5. Operating condition range
Temperature: 10 ~ 45°C
Humidity: under 95%RH max.(without dew condensation)
- 4-6. Recommended storage condition: - 30 ~ 60°C
- 4-7. Time for stabilization: 1 minute after power turned on
- 4-8. Dimensions: 59(W) \times 45(H) \times 22(D) [mm]
- 4-9. Weight: 30g(approx.)
- 4-10. Output Method: Negative Logic, Digital output,
Hi :4.5V Lo : 0.7V (As Input impedance : 20k Ω)
Op-Amp output, Pull-up resistor : 10k Ω

SHINYEI KAISHA

5. Standard test Method

Burn two pieces of cigarettes in an ambient of temperature $23 \pm 7^{\circ}\text{C}$ to generate cigarette smoke in the room. Then extinguish them after fully burned out, use air purifier (with HEPA filter) to lessen the concentration of smokes. Check the sensor output variation in accordance with fluctuation of concentration.

Sensor output characteristics should be set in between standard "upper limit" sensor and standard "lower limit" sensor.

Particle counter is to be referred for the smoke concentration.

- Cigarette: 2 pcs. Cigarette (Japanese Brand :Mild seven)
 Particle counter: RION Co., Ltd. Model No. KC-01B or KC-01C
 (particle size level : $1\mu\text{m}$ min.)
 Smoke generator: Automatic smoke suction machine
 (Japan Electric Industrial Organization JEM146)
 Room capacity: $20 \sim 30\text{m}^3$
 Stirring: Stir by electric fan. During the test, collect dusts
 by air purifier, and lessen the concentration rate of cigarette smoke.
 Sensor setting location: Center of the room, $40 \sim 80\text{cm}$ height from the floor level.
 Rated input voltage: $\text{DC}5\text{V} \pm 2\%$

6. Mechanical Characteristics

No.	Item	Test method	Characteristics
1	Drop test	Drop it unintentionally from 70 cm height down to the hard wooden board for 3 times at random.	No damage, No breakage No failure on electrical Characteristics

7. Endurance Characteristics

No.	Item	Test method	Characteristics
1	heat endurance	Leave it in the atmosphere of the 60°C for 1,000 hours.	Within $\pm 0.5\text{V}$ at the original value.
2	cold endurance	Leave in the atmosphere of the -30°C for 500 hours.	Within $\pm 0.5\text{V}$ at the original value.
3	Heat cycle	Repeat 10 times in the following cycle. After leaving in the atmosphere of -25°C for 30 minutes, move it into the atmosphere of $+70^{\circ}\text{C}$ within 10 seconds. Further, return to the atmosphere of -25°C after 30 minutes.	Within $\pm 0.5\text{V}$ at the original value.

PRODUCT SPECIFICATIONS

PPD3NS

SP-30-E-02003

3

4	Heat shock	Repeat 10 times for following cycle. After soaking in the liquid of +5°C for 5 minutes, move to the liquid of +70°C within 10 seconds. Further, return to the liquid of +5°C after 5 minutes.	Within \pm 0.5V at the original value.
5	High temperature and humidity	Leaving it in the atmosphere of 60°C, 90% ~ 95%RH for 1,000 hours.	Within \pm 0.5V at the original value.
6	H ₂ S endurance	Leaving it in the atmosphere of 25°C, over 95%RH, 10 ~ 15ppm for 10days.	Within \pm 0.5V at the original value.
7	SO ₂ endurance	Leaving it in the atmosphere of 25°C, over 95%RH, 25 \pm 5ppm for 10 days.	Within \pm 0.5V at the original value.

8. Endurance Characteristics

No.	Item	Testing method	Characteristics
1	High temperature and humidity	Leaving it in the atmosphere of 60°C, 90~95%RH for 1,000 hours.	Within \pm 0.5V at the original value.
2	On-off cycle test	Apply the power on-off test for 500 hours in the atmosphere of 45°C, 90~ 95%RH. On time: 5 minutes / Off time : 5 minutes	Within \pm 0.5V at the original value.
3	vibration	10 ~ 15 ~ 10Hz / 1 minute vibration amplitude : 1.5mm X,Y,Z-Way , Per 2 hours	

9. Open-Short Circuit Test

9-1. Test method :

Keep the mutual terminals of electronic parts in short circuit, or keep the terminals opened, and supply the electric current to it.

9-2. Characteristics :

Not to cause the smoking, firing, burning on the electric circuits, for which open-short

circuit test was taken. But the simple smoke or burn, which is not in danger of fire can be disregarded.

SHINYEI KAISHA

10. Tracking Endurance Test

10-1. Test method :

Drops 5% saltwater 200 times on the printed board with 30 seconds interval.

10-2. Characteristics :

Not to cause the smoke or fire.

11. Solder Crack Test

11-1. Test method :

Repeat 200 times for following cycle. After soaking in the liquid of -40°C for 1 hour, move to the liquid of $+80^{\circ}\text{C}$ within 10 seconds. Further, return to the liquid of -40°C after 1 hour.

11-2. Characteristics :

Not to crack or line

12. Life expectancy

The light emitter is continuously turned on for 7 years minimum.

13. Maintenance of the Sensor

Lens need to be cleaned depending on the condition. Cigarette tar on the lens should affect the sensitivity of the sensor. Wet a end of the swab with water and wipe the lens with it and then dry lens with the other end of swab.

14. Standard Sensor

We hold "upper limit" sensor and "lower limit" sensor as standard against which every unit of sensor to be set its characteristics in between upper and lower limit characteristics curve. Those standard "upper limit" sensor and "lower limit" sensor are to be tested, calibrated periodically.

15. Instruction for operation / Caution

15-1. Setting position : Use it at the Vertical position (within $\pm 3^{\circ}$)

15-2. Please have a kind of door to cover the front window to make sensing area completely dark condition

15-3. Don't use in an ambient of the organic gas and flammable gas.

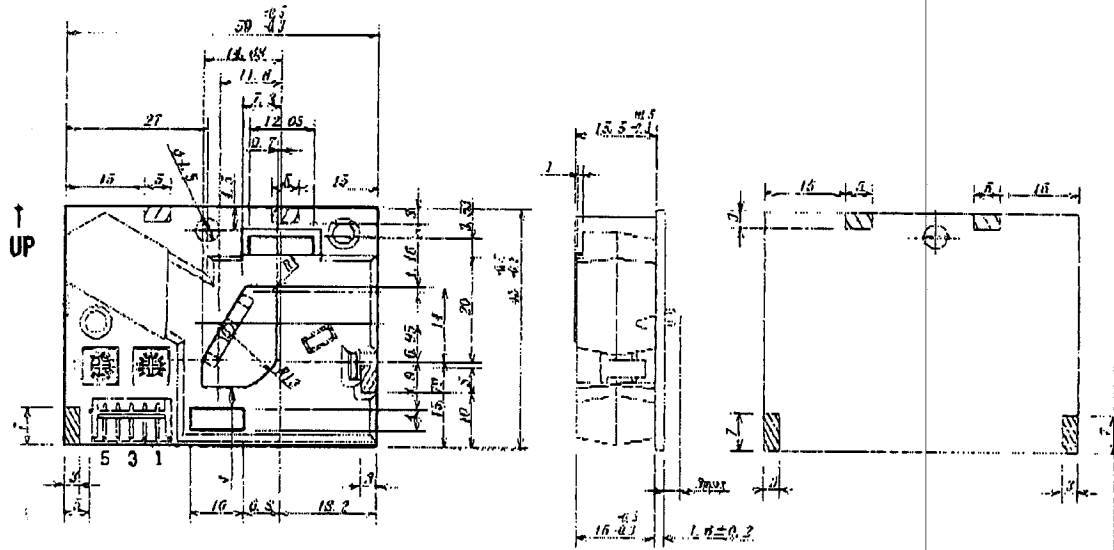
15-4. Don't use the material such as alcohol to clean the lens. Use water only.

16. Marking for Lot Number

Indicate the model number, date of manufacture on PCB by silk screening.

17. Specification is subject to change for improvement, without prior notice.

Fig1



CONNECTOR

CN : S5B-EH(JST)

1 : COMMON(GND)

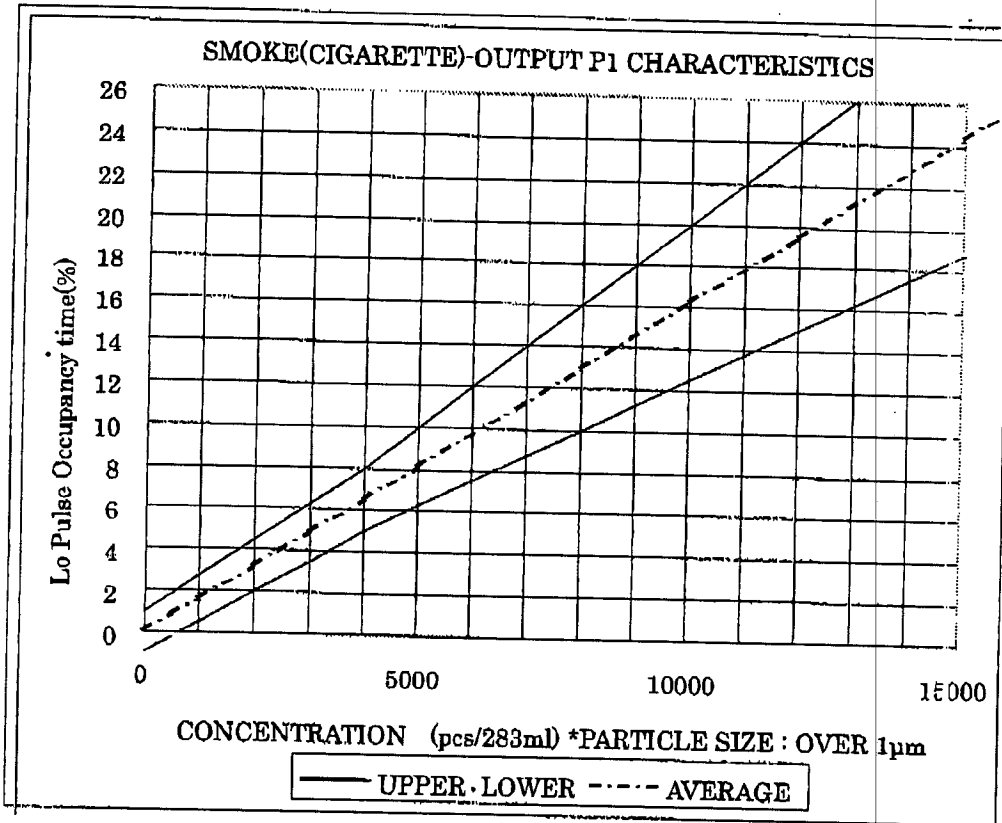
2 : OUTPUT(P2)

3 : INPUT(5VDC 90mA)

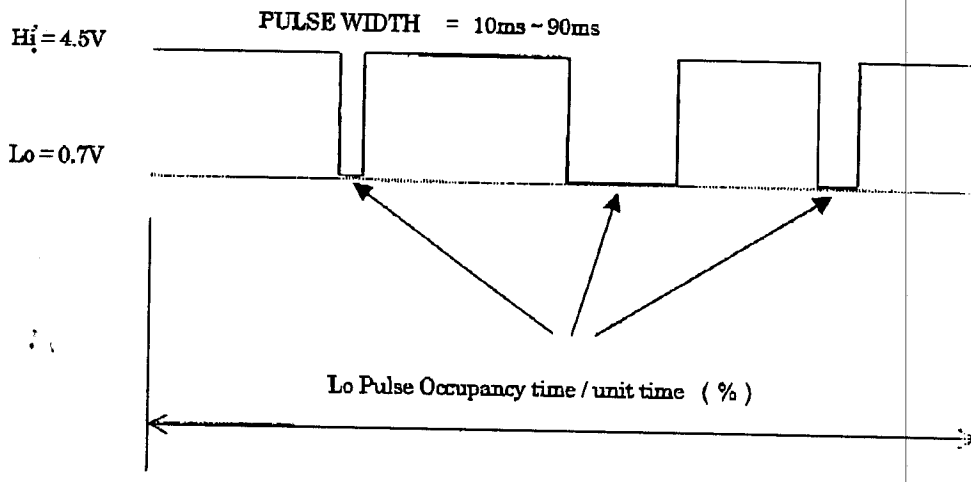
4 : OUTPUT(P1)

5 : INPUT(T1)··· FOR THRESHOLD FOR [P2]

Fig 2



$$\text{AVERAGE} = 6.5 / 4,000 \times X \quad X / 283\text{ml (over } 1\mu\text{ m)}$$



欢迎索取免费详细资料、设计选型指南和光盘、样品；产品繁多未能尽录，欢迎来电查询。

[中国传感器科技信息网：HTTP://WWW.SENSOR-IC.COM/](http://WWW.SENSOR-IC.COM/)

[工控安防网：HTTP://WWW.PC-PS.NET/](http://WWW.PC-PS.NET/)

[消费电子专用电路网：HTTP://WWW.SUNSTARE.COM/](http://WWW.SUNSTARE.COM/)

E-MAIL：xjr5@163.com szss20@163.com

MSN：suns8888@hotmail.com

QQ：195847376

地址：深圳市福田区福华路福庆街鸿图大厦 1602 室

电话：0755-83376549 83376489 83387030 83387016

传真：0755-83376182 83338339 邮编：518033 手机：(0)13902971329

深圳展销部：深圳华强北路赛格电子市场 2583 号 TEL/FAX：
0755-83665529 25059422

北京分公司：北京海淀区知春路 132 号中发电子大厦 3097 号

TEL：010-81159046 82615020 13501189838 FAX：010-82613476

上海分公司：上海市北京东路 668 号上海赛格电子市场 2B35 号

TEL：021-28311762 56703037 13701955389 FAX：021-56703037

西安分公司：西安高新开发区 20 所(中国电子科技集团导航技术研究所)
西安劳动南路 88 号电子商城二楼 D23 号

TEL：029-81022619 13072977981 FAX:029-88789382

成都：TEL:(0)13717066236

技术支持：0755-83394033 13501568376

我们专业以现代信息产业（计算机、通讯及传感器）三大支柱之一的传感器为主营业务，专业经营各类传感器的代理、销售生产、网络信息、科技图书资料及配套产品设计、工程开发。我们的专业网站——[中国传感器科技信息网（全球传感器数据库）](http://www.sensor-ic.com/) [WWW.SENSOR-IC.COM](http://www.sensor-ic.com/) 服务于全球高科技生产商及贸易商，为企业科技产品开发提供技术交流平台。欢迎各厂商互通有无、交换信息、交换链接、发布寻求代理信息。欢迎国外高科技传感器、变送器、执行器、自动控制产品厂商介绍产品到 中国，共同开拓市场。本网站是关于各种传感器-变送器-仪器仪表及工业自动化大型专业网站,深入到工业控制、系统工程计 测量、自动化、安防报警、消费电子等众多领域，把最新的传感器-变送器-仪器仪表买卖信息,最新技术供求,最新采购商,行业动态，发展方向，最新的技术应用和市场资讯及时的传递给广大科技开发、科学研究、产品设计人员。本网站已成功为石油、化工、电力、医药、生物、航空、航天、国防、能源、冶金、电子、工业、农业、交通、汽车、矿山、煤炭、纺织、信息、通信、IT、安防、环保、印刷、科研、气象、仪器仪表等领域从事科学研究、产品设计、开发、生产制造的科技人员、管理人员、和采购人员提供满意服务。 **我公司专业开发生产、代理、经销、销售各种传感器、变送器、敏感元器件、开关、执行器、仪器仪表、自动化控制系统：** 专门从事设计、生产、销售各种传感器、变送器、各种测控仪表、热工仪表、现场控制器、计算机控制系统、数据采集系统、各类环境监控系统、专用控制系统应用软件以及嵌入式系统开发及应用等工作。如热敏电阻、压敏电阻、温度传感器、温度变送器、湿度传感器、湿度变送器、气体传感器、气体变送器、压力传感器、压力变送、称重传感器、物（液）位传感器、物（液）位变送器、流量传感器、流量变送器、电流（压）传感器、溶氧传感器、霍尔传感器、图像传感器、超声波传感器、位移传感器、速度传感器、加速度传感器、扭距传感器、红外传感器、紫外传感器、火焰传感器、激光传感器、振动传感器、轴角传感器、光电传感器、接近传感器、干簧管传感器、继电器传感器、微型电泵、磁敏（阻）传感器、压力开关、接近开关、光电开关、色标传感器、光纤传感器、齿轮测速传感器、时间继电器、计数器、计米器、温控仪、固态继电器、调压模块、电磁铁、电压表、电流表等特殊传感器。同时承接传感器应用电路、产品设计和自动化工程项目。产品在电信、电力、石化、环保、造纸、冶金、食品、医疗、暖通空调等领域拥有广泛的应用前景。

更多产品请看本公司产品专用销售网站：

商斯达中国传感器科技信息网：<http://www.sensor-ic.com/>

商斯达工控安防网：<http://www.pc-ps.net/>

商斯达电子 元器件网：<http://www.sunstare.com/>

商斯达微波光电产品网：[HTTP://www.rfoe.net/](http://www.rfoe.net/)

商斯达消费电子产品网：<http://www.icasic.com/>

商斯达军工产品网：<http://www.junpinic.com/>

商斯达实业科技产品网：<http://www.sunstars.cn/>传感器销售热线：

地址：深圳市福田区福华路福庆街鸿图大厦 1602 室

电话：0755-83607652 83376489 83376549 83370250 83370251 82500323

传真：0755-83376182 (0) 13902971329 MSN: SUNS8888@hotmail.com

邮编：518033 E-mail:szss20@163.com QQ: 195847376

深圳赛格展销部：深圳华强北路赛格电子市场 2583 号 电话：0755-83665529 25059422

技术支持：0755-83394033 13501568376

欢迎索取免费详细资料、设计指南和光盘；产品凡多，未能尽录，欢迎来电查询。

北京分公司：北京海淀区知春路 132 号中发电子大厦 3097 号

TEL: 010-81159046 82615020 13501189838 FAX: 010-62543996

上海分公司：上海市北京东路 668 号上海赛格电子市场 2B35 号

TEL: 021-28311762 56703037 13701955389 FAX: 021-56703037

西安分公司：西安高新开发区 20 所(中国电子科技集团导航技术研究所)

西安劳动南路 88 号电子商城二楼 D23 号

TEL: 029-81022619 13072977981 FAX:029-88789382