

Flow sensor for liquid media type 230

Flow range
1.8 ... 150 l/min

Nominal diameters
DN 10 / 15 / 20 / 25

Temperature measurement
-40 ... +125 °C



The flow sensor type 230 is based on the Kármán vortex trail. You can choose between various versions as integrated temperature measurement.

The type 230 has a rugged construction of red brass. With no moving parts the flow sensor is not sensitive to debris, has marginal pressure loss and high accuracy.

- Flow measuring with voltage, current or frequency output
- Temperature non-sensitive measuring principle
- Excellent media resistance (measuring element not in contact with the media)
- CE conformity
- Wide application temperature range
- Marginal loss of pressure
- Measuring element not sensitive to debris
- Zinc free red brass housing

Flow measurement

Measuring principle	Vortex	Piezoelectric sensor element
Measuring range		1.8 ... 150 l/min
Nominal diameters		DN 10 / 15 / 20 / 25
Accuracy at < 50% fs (water)		< 1% fs
Accuracy at > 50% fs (water)		< 2% measuring value
Response time	Immediately Therefore suitable for spigot use.	Frequency output
		Analogue output
		Signal delay < 100 ms
		Response time < 5 ms
		Signal delay < 2 s
		Response time < 500 ms

Temperature measurement

Measuring principle	Resistance	PT1000
	Measuring range	-40 ... +125 °C
PT1000	Accuracy	class B DIN EN 60751
		@ T = 0 °C ± 0.3 K
		@ T ≠ 0 °C ± 0.3 K ± 0.005 * T
0 ... 10 V	Measuring range	-25 ... +125 °C
	Accuracy	± 0.5 K ± 0.005 * T
	Calculation temperature	T (°C) = $\frac{150}{10 V} * U_{OUT,T} - 25$ °C
Temperature influences	Self-heating at temperature sensor	1 K/mW
	Conduction resistance to connector	0.8 Ohm

Operating conditions

Medium	Suitable for heating circuit water with the usual additives Drinking water	Other medium on request
Temperature	Media	≤ +125 °C
	Ambient	-15 ... +85 °C
	Storage	-30 ... +85 °C
	(for lifetime)	12 bar at +40 °C
Max. pressure and medium temperature	(for lifetime)	6 bar at +100 °C
	(for 600 hours)	4 bar at +125 °C
	(for 2 hours)	4 bar at +140 °C
	(max. test pressure)	18 bar at +40 °C
Cavitation	The following equation is valid to prevent cavitation:	$P_{abs outlet} / P_{difference} > 5.5$

Materials in contact with medium (FDA-conform)

Sensor paddle	ETFE
Case	Red brass / PA6T/6I (40% GF)
Sealing material	EPDM (perox.) FPM

Electrical overview

		Frequency output	Voltage output	Current output
Power supply	U _{IN}	4.75 ... 33 VDC	11.5 ... 33 VDC	8 ... 33 VDC
Output	Frequency square pulse signal	U _{OUT_Q-frequency}	< 0.5 ... > U _{IN} - 0.5 V	-
Flow (Q)	Analogue signal	U _{OUT_Q} OR I _{OUT}	0 ... 10 V	4 ... 20 mA
Output	Resistant signal	R _{OUT_PT1000}	PT1000 class B DIN EN 60751	-
temperature (T)	Voltage signal	U _{OUT_T}	0 ... 10 V	-
Electrical connection and protection class		M12x1 (IP 65)	M12x1 (IP 65)	M12x1 (IP 65)
Load against GND or IN		< 1 mA / < 100 nF	< 6 mA / < 100 nF ¹⁾	< (U _{IN} - 8 V) / 20 mA
Current consumption load free (I _N)		< 2mA	< 5 mA	-

Weight

DN 10	outside thread L	~ 230 g
	outside thread A	~ 240 g
DN 15	outside thread L	~ 310 g
	outside thread A	~ 340 g
DN 20	outside thread L	~ 440 g
	outside thread A	~ 510 g
DN 25	outside thread L	~ 600 g

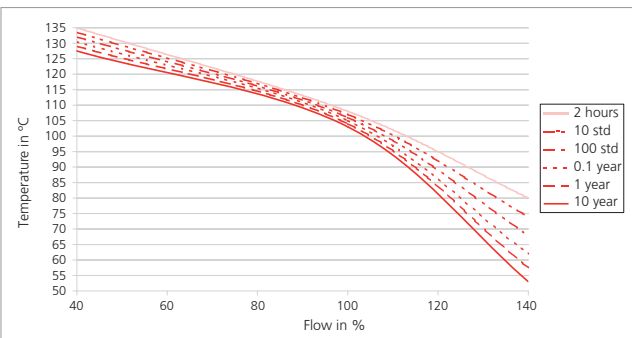
Test / Admissions

Electromagnetic compatibility	CE-conform acc. to EN 61326-2-3
-------------------------------	---------------------------------

Packaging

Single packaging	
------------------	--

Minimum life span on high flow rate and high temperature



Nominal diameters dependent variables

Nominal diameters	Tube connection	Measuring range	Quantity per puls @ 50% fs	Flow range	Characteristic line frequency output	Frequency range	Characteristic line voltage output	Characteristic line current output	Pressure drop ^{1), 2)}
DN 10	L	1.8 ... 32 l/min	1.378 ml	0.265 ... 4.716 m/s	0.0837 * f - 0.2	24 ... 385 Hz	Q = 3.2 * U _{OUT,Q}	Q = 2.000 * (I - 4 mA)	22.50 * Q ²
DN 10	L	2.0 ... 40 l/min	1.381 ml	0.295 ... 5.895 m/s	0.0837 * f - 0.2	26 ... 480 Hz	Q = 4.0 * U _{OUT,Q}	Q = 2.500 * (I - 4 mA)	22.50 * Q ²
DN 15	A	3.5 ... 50 l/min	2.998 ml	0.290 ... 4.145 m/s	0.1813 * f - 0.2	20 ... 277 Hz	Q = 5.0 * U _{OUT,Q}	Q = 3.125 * (I - 4 mA)	6.70 * Q ²
	L		2.975 ml		0.1799 * f - 0.2	21 ... 279 Hz			
DN 20	A	5.0 ... 85 l/min	6.109 ml	0.265 ... 4.509 m/s	0.3691 * f - 0.3	14 ... 231 Hz	Q = 8.5 * U _{OUT,Q}	Q = 5.313 * (I - 4 mA)	2.50 * Q ²
	L		6.057 ml		0.3660 * f - 0.3	14 ... 233 Hz			
DN 25	A	9.0 ... 150 l/min	12.114 ml	0.283 ... 4.709 m/s	0.7288 * f - 0.2	13 ... 206 Hz	Q = 15 * U _{OUT,Q}	Q = 9.375 * (I - 4 mA)	0.92 * Q ²
	L		12.143 ml		0.7305 * f - 0.2				

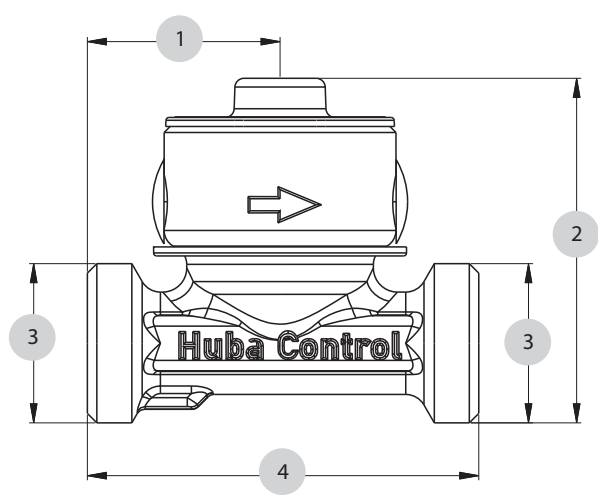
Order code selection table 230. X X X X X X X

Version	Flow	9						4	
	Flow and temperature (PT1000)	8						5	
	Flow and temperature (0 ... 10 V)	6						5	
Nominal diameters and flow range	DN 10 1.8 ... 32 l/min.		1	0					L
	DN 10 2.0 ... 40 l/min.		1	1					L
	DN 15 3.5 ... 50 l/min.		1	5					
	DN 20 5.0 ... 85 l/min.		2	0					
	DN 25 9.0 ... 150 l/min.		2	5					
Output and power supply	Frequency output (Square pulse signal)	4.75 ... 33 VDC	8,9					2	
	Analogue signal 0 ... 10 V	11.5 ... 33 VDC						3	
	Analogue signal 4 ... 20 mA	8 ... 33 VDC	8,9					4	
Electrical connection	Connector M12x1 2- or 3-pole (condensation protection)		9					4	
	Connector M12x1 4- or 5-pole (condensation protection)		8,6					5	
Sealing material	EPDM Ethylene propylene rubber (peroxidically cross-linked)								1
	FPM Fluoro elastomer								2
Red brass body	Red brass armature outside thread A (see dimension diagram)								A
	Red brass armature outside thread L (see dimension diagram)								L

Accessories ³⁾

				Order number
Straight-wire box for connector M12x1 with cable	3-pole	200 cm		114605
Corner-wire box for connector M12x1 with cable	3-pole	200 cm		114604
Straight-wire box for connector M12x1 with cable	5-pole	200 cm	(with temperature)	114564
Corner-wire box for connector M12x1 with cable	5-pole	200 cm	(with temperature)	114563
Straight-wire box for connector M12x1 screwing terminal				115024

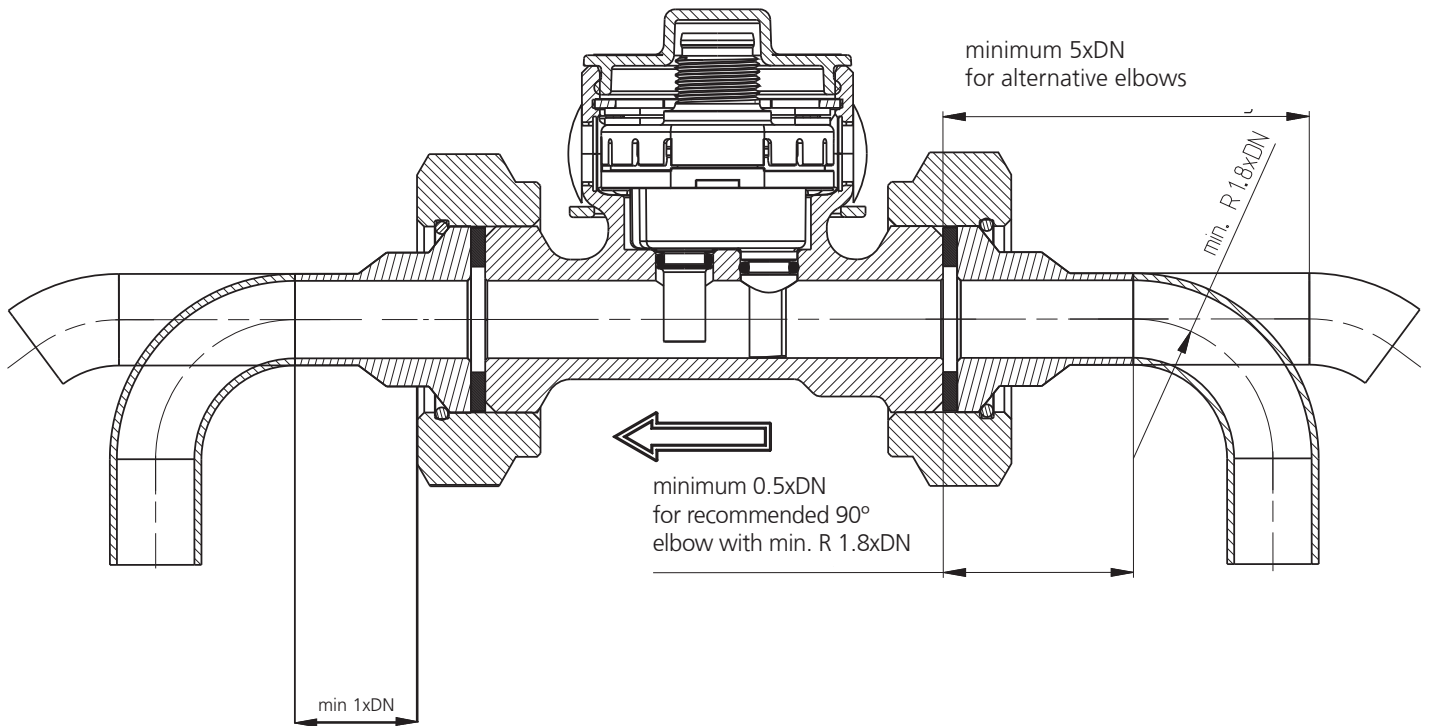
Dimension diagram DN 10, 15, 20, 25



		1	2	3	4
DN10	L	32	57.22	G ¾	65
DN15	A	40	59.22	G ¾	75
DN15	L	40	62.65	G 1	75
DN20	A	49	64.62	G 1	86
DN20	L	49	68.95	G 1¼	86
DN25	A	70	71.45	G 1¼	109
DN25	L	70	74.40	G 1½	109

Consider the following to ensure the correct function of the sensor.

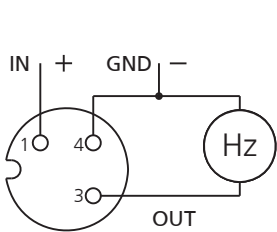
- Only diameter changes from large to small are allowed.
- Avoid repeated elbows in the same level at entryside



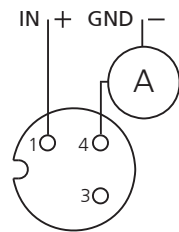
Electrical connection

Connector M12x1 without temperature measurement

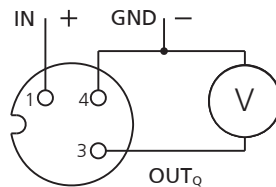
1



Frequency output



current output

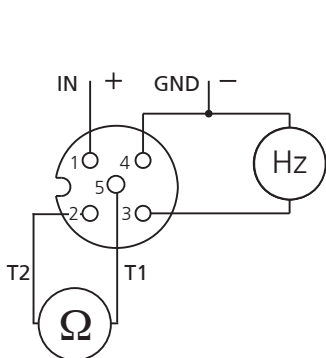


voltage output

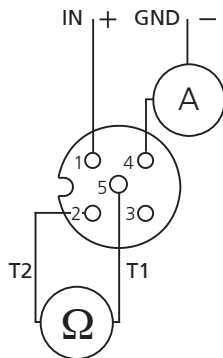
Pin	Colour
1	brown
3	blue
4	black
1	brown
2	white
3	blue
4	black
5	gray

Connector M12x1 with temperature measurement

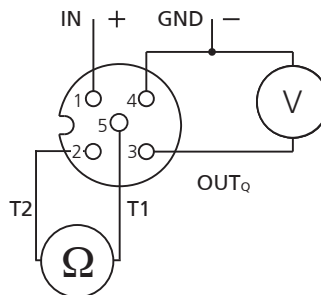
2



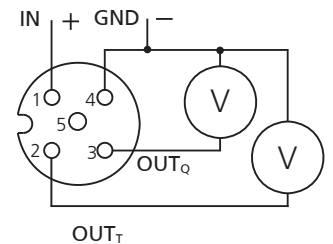
Frequency output with PT1000



current output with PT1000



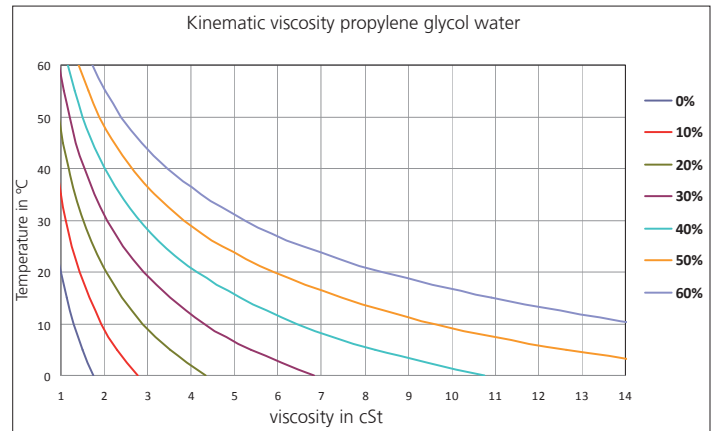
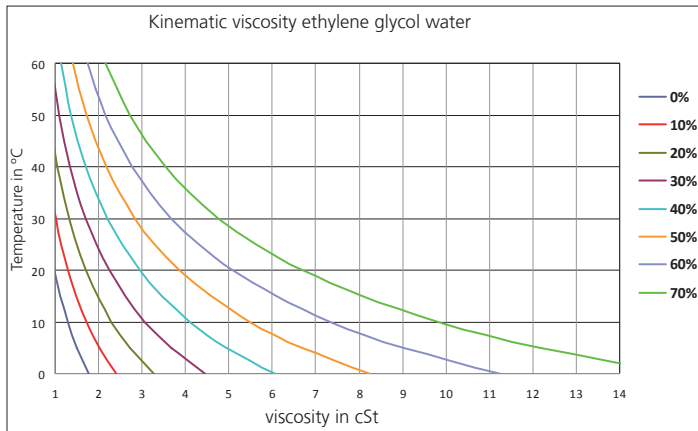
voltage output with PT1000



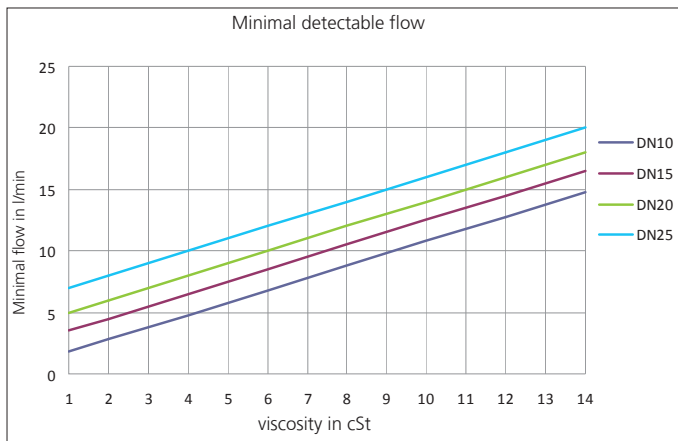
voltage output with temperature output 0 ... 10 V

With the following definitions we are able to correct the influence of media with higher viscosity than water (= media viscosity > 1.8 cSt) in order to reach a measuring accuracy of 3% fs in the range of 1.8 - 4 cSt and of 4% in the range of 4 - 14 cSt (ν = viscosity in cSt).

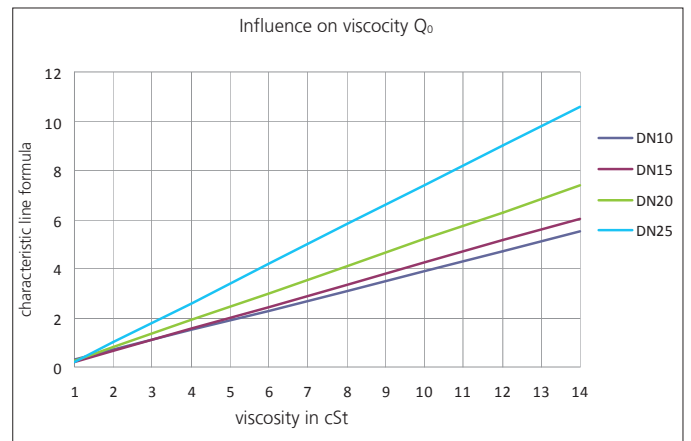
Definition of viscosity of glycol-water-compound



Definition of respond threshold Q_{min}



Definition of characteristic line formula $Q = k * f - Q_0$



Formula respond threshold Q_{min} in l/min
< DN 10 not possible

- DN 10: $Q_{min} = \nu + 0.8$
- DN 15: $Q_{min} = \nu + 2.5$
- DN 20: $Q_{min} = \nu + 4.0$
- DN 25: $Q_{min} = \nu + 6.0$

Formula characteristic line for $Q \geq Q_{min}$ in l/min
< DN 10 not possible

- Frequency output:
- DN10: $Q = 0.0832 * f - 0.40\nu + 0.20$
 - DN15: $Q = 0.1843 * f - 0.45\nu + 0.25$
 - DN20: $Q = 0.3754 * f - 0.55\nu + 0.25$
 - DN25: $Q = 0.7467 * f - 0.80\nu + 0.60$

Voltage output 0 ... 10 V

- DN10: $Q = 3.2 * U_{Out} - 0.40\nu + 0.40$
- DN15: $Q = 5.0 * U_{Out} - 0.45\nu + 0.45$
- DN20: $Q = 8.5 * U_{Out} - 0.55\nu + 0.55$
- DN25: $Q = 15.0 * U_{Out} - 0.80\nu + 0.80$

Current output 4 ... 20 mA (I in mA)

- DN10: $Q = 2.000 * (I - 4 \text{ mA}) - 0.40\nu + 0.40$
- DN15: $Q = 3.125 * (I - 4 \text{ mA}) - 0.45\nu + 0.45$
- DN20: $Q = 5.313 * (I - 4 \text{ mA}) - 0.55\nu + 0.55$
- DN25: $Q = 9.375 * (I - 4 \text{ mA}) - 0.80\nu + 0.80$

Huba Control

FOR FINE PRESSURE AND FLOW MEASUREMENT

Huba Control AG
Headquarters

Industriestrasse 17
5436 Würenlos
Telefon +41 (0) 56 436 82 00
Telefax +41 (0) 56 436 82 82
info.ch@hubacontrol.com

Huba Control AG
Niederlassung Deutschland

Schlattgrabenstrasse 24
72141 Walddorfhäslach
Telefon +49 (0) 7127 23 93 00
Telefax +49 (0) 7127 23 93 20
info.de@hubacontrol.com

Huba Control SA
Succursale France

Rue Lavoisier
Technopôle Forbach-Sud
57602 Forbach Cedex
Téléphone +33 (0) 387 847 300
Télécopieur +33 (0) 387 847 301
info.fr@hubacontrol.com

Huba Control AG
Vestiging Nederland

Hamseweg 20A
3828 AD Hoogland
Telefoon +31 (0) 33 433 03 66
Telefax +31 (0) 33 433 03 77
info.nl@hubacontrol.com

Huba Control AG
Branch Office United Kingdom

Unit 13 Berkshire House
County Park Business Centre
Shrivenham Road
Swindon - Wiltshire SN1 2NR
Phone +44 (0) 1993 776667
Fax +44 (0) 1993 776671
info.uk@hubacontrol.com

www.hubacontrol.com