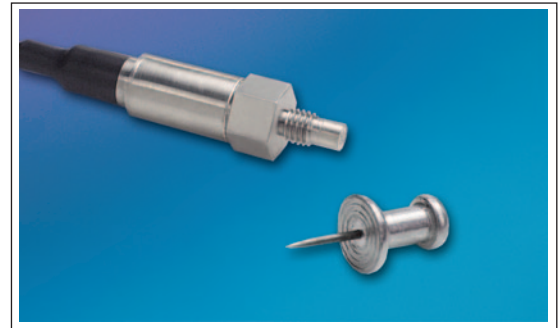




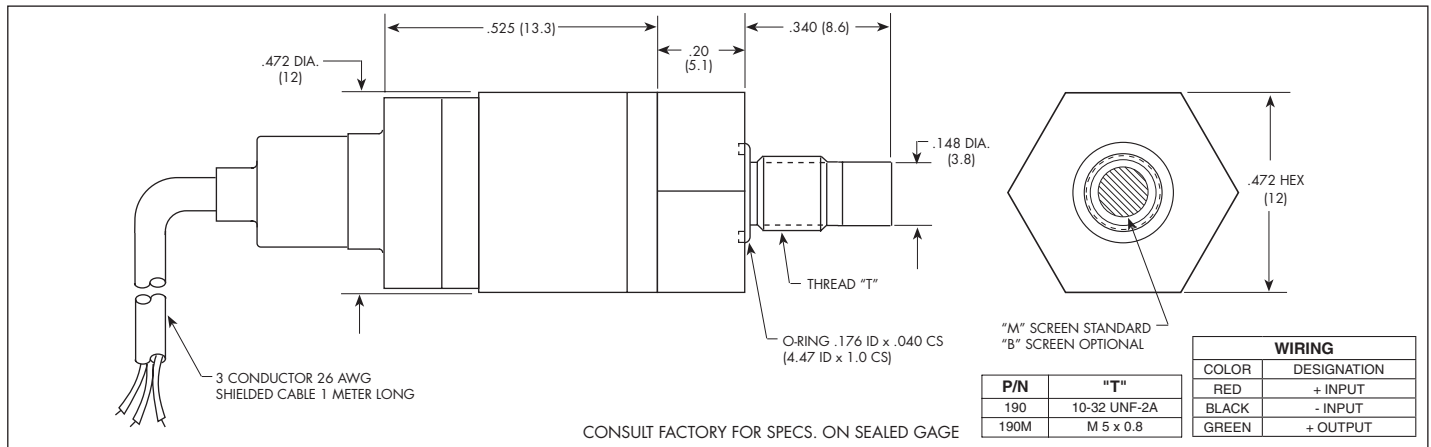
MINIATURE 5VDC OUTPUT IS® PRESSURE TRANSDUCER

ETL-76A-190 (M) SERIES

- Robust Construction
 - Ultra Miniature Amplified Version
 - High Temperature Capability
 - Intrinsically Safe Patented Leadless Technology
- Applications Available (i.e. IS-ETL-76A-190)



The ETL-76 Series is one of the smallest amplified transducers currently available. It incorporates the latest pressure sensing technology – Kulite's dielectrically isolated, silicon on silicon, patented leadless sensing element, which enables this device to be used in harsh environments. The ETL-76A version also has high temperature capability, being compensated over -40°F to +350°F. This transducer is the ideal choice where weight and space are at a premium.



INPUT	0.35	1.0	1.7	3.5	7	17	35	70	140	210 BAR
Pressure Range	5	15	25	50	100	250	500	1000	2000	3000 PSI
Operational Mode	Absolute, Sealed Gage									
Over Pressure	2 Times Rated Pressure to 1000 PSI (70 BAR) 1.5 Times Rated Pressure Above 1000 PSI to a Max. of 6000 PSI (420 BAR)									
Burst Pressure	3 Times Rated Pressure to a Maximum of 6000 PSI (420 BAR)									
Pressure Media	All Nonconductive, Noncorrosive Liquids or Gases (Most Conductive Liquids and Gases - Please Consult Factory)									
Maximum Electrical Current	25 mA (Max.)									
Rated Electrical Excitation	12 ± 4 VDC					28 ± 4 VDC				
OUTPUT	5 VDC ± 150mV					5 VDC ± 150mV or 10 VDC ± 300mV				
Full Scale Reading	5 VDC ± 150mV					5 VDC ± 150mV or 10 VDC ± 300mV				
Residual Unbalance	0.5V ± 75mV									
Output Impedance	200 Ohms (Typ.)									
Combined Non-Linearity, Hysteresis and Repeatability	± 0.1% BFSL (Typ.), ± 0.5% BFSL (Max.)									
Bandwidth (-3dB)	DC to 3000 Hz									
Resolution	Infinitesimal									
Acceleration Sensitivity % FS/g	1.5x10 ⁻³	1.0x10 ⁻³	5.0x10 ⁻⁴	3.0x10 ⁻⁴	1.5x10 ⁻⁴	1.0x10 ⁻⁴	6.0x10 ⁻⁵	4.0x10 ⁻⁵	2.5x10 ⁻⁵	1.9x10 ⁻⁵
Perpendicular	2.2x10 ⁻⁴	1.4x10 ⁻⁴	6.0x10 ⁻⁵	4.0x10 ⁻⁵	2.0x10 ⁻⁵	1.0x10 ⁻⁵	6.0x10 ⁻⁶	3.0x10 ⁻⁶	3.0x10 ⁻⁶	2.0x10 ⁻⁶
Transverse	100 Megohm Min. @ 50 VDC									
Insulation Resistance	-65°F to +375°F (-55°C to +190°C) (Max.)									
ENVIRONMENTAL	-40°F to +350°F (-40°C to +175°C)									
Operating Temperature Range	± 1% FS/100°F (Typ.)									
Compensated Temperature Range	± 1% /100°F (Typ.)									
Thermal Zero Shift	50g Peak, Sine 10 to 2000 Hz									
Thermal Sensitivity Shift	100% Relative Humidity									
Linear Vibration	100g half Sine Wave 11 msec. Duation									
Humidity	3 Conductor 26 AWG Shielded Viton Cable 1 Meter Long									
Mechanical Shock	10 Grams Excluding Cable									
PHYSICAL	Fully Active Four Arm Wheatstone Bridge Dielectrically Isolated Silicon on Silicon Patented Leadless Technology									
Electrical Connection	15 Inch-Pounds (Max.)									
Weight										
Pressure Sensing Principle										
Mounting Torque										

Note: Custom pressure ranges, accuracies and mechanical configurations available. Dimensions are in inches. Dimensions in parenthesis are in millimeters.

Continuous description of products and services. SUNSTAR 自动化 <http://www.sensor-ic.com/> TEL:0755-83376489 FAX:0755-83376182 E-MAIL: szss20@163.com

KULITE SEMICONDUCTOR PRODUCTS, INC. • One Willow Tree Road • Leonia, New Jersey 07605 • Tel: 201 461-0900 • Fax: 201 461-0990 • <http://www.kulite.com>