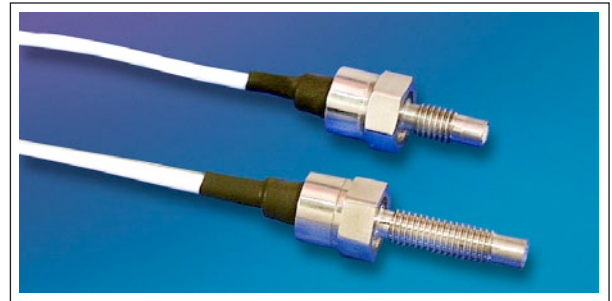




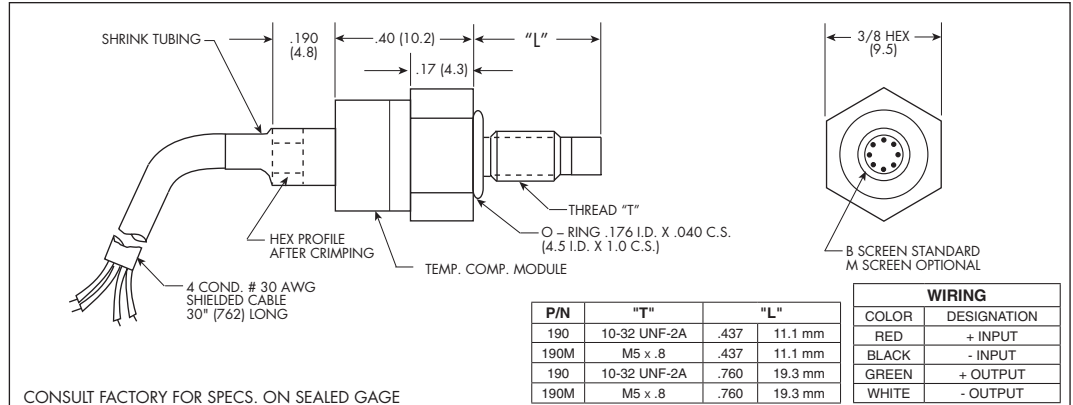
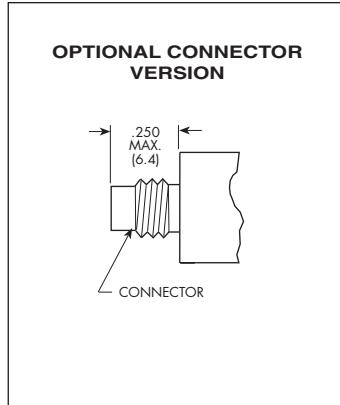
MINIATURE RUGGEDIZED IS® PRESSURE TRANSDUCER

XTL-AC-190 (M) SERIES

- Acceleration/Vibration Insensitive Design VIS²®
- High Natural Frequency
- Easy Installation
- Intrinsically Safe Patented Leadless Technology Applications Available (i.e. IS-XTL-AC-190)



The ruggedness of this sensor has not compromised its performance. It was designed for ease of installation and will operate properly in any medium compatible with 15-5 SS or SiO₂. The XTL-AC-190 incorporates the latest Kulite patented and patent pending technologies in pressure sensor development. One of these patented innovative technologies makes the XTL-AC-190 insensitive to acceleration forces.



INPUT Pressure Range	1.7 25	3.5 50	7 100	17 250	35 500	70 1000	140 BAR 2000 PSI
Operational Mode	Absolute, Sealed Gage						
Over Pressure	2 Times Rated Pressure to a Maximum of 3000 PSI (210 BAR)						
Burst Pressure	3 Times Rated Pressure to a Maximum of 5000 PSI (350 BAR)						
Pressure Media	All Nonconductive, Noncorrosive Liquids or Gases (Most Conductive Liquids and Gases - Please Consult Factory)						
Rated Electrical Excitation	10 VDC/AC						
Maximum Electrical Excitation	15 VDC/AC						
Input Impedance	1000 Ohms (Min.)						
OUTPUT Output Impedance	1000 Ohms (Nom.)						
Full Scale Output (FSO)	100 mV (Nom.)						
Residual Unbalance	± 5 mV (Typ.)						
Combined Non-Linearity, Hysteresis and Repeatability	± 0.1% FSO BFSL (Typ.), ± 0.5% FSO (Max.)						
Resolution	Infinitesimal						
Natural Frequency (KHz) (Typ.)	240	300	380	550	700	1000	1400
Acceleration Sensitivity % FS/g Perpendicular Transverse	N/A <<1x10 ⁻⁶						
Insulation Resistance	100 Megohm Min. @ 50 VDC						
ENVIRONMENTAL Operating Temperature Range	-65°F to +350°F (-55°C to +175°C)						
Compensated Temperature Range	+80°F to +180°F (+25°C to +80°C) Any 100°F Range Within The Operating Range on Request						
Thermal Zero Shift	± 1% FS/100°F (Typ.)						
Thermal Sensitivity Shift	± 1% /100°F (Typ.)						
Steady Acceleration	10,000 g. (Max.)						
Linear Vibration	10-2,000 Hz Sine, 100g. (Max.)						
PHYSICAL Electrical Connection	4 Conductor 30 AWG Shielded Cable 30" Long						
Weight	4 Grams (Nom.) Excluding Cable						
Pressure Sensing Principle	Fully Active Four Arm Wheatstone Bridge Dielectrically Isolated Silicon on Silicon Patented Leadless Technology						
Mounting Torque	15 Inch-Pounds (Max.)						

Note: Custom pressure ranges, accuracies and mechanical configurations available. Dimensions are in inches. Dimensions in parenthesis are in millimeters.

Continuous development and refinement of our products may result in specification changes without notice. All dimensions nominal (N).