

SPEZIFIKATIONEN

GENAUIGKEIT

TFB @ -25...+80°C:	± 1.0 % d.S. typ.
Genauigkeit @ +25°C:	± 0.5 % d.S. typ.
TK Nullpunkt und Spanne:	±0.01% d.S./K typ.
Langzeitstabilität	
1 Jahr @ +25°C:	± 0.2 % d.S. typ.
Gerätetemperatur:	±2.5°C (°F)

ELEKTRISCHE DATEN

Ausgangssignal/ Speisespannung	
4...20 mA:	24 (11...32) VDC
0...10 VDC:	24 (15...30) VDC
Stromaufnahme:	< 70 mA
Reaktionszeit:	typ. 30 s/10...90% (0.2m/s,H2O)
Anzeige	
LCD-Display:	beleuchtet
4 Digit Auflösung:	≤ 0.2% d.S.
Anzeigebereich:	-5...125% d.S.
Bedienung:	menuegeführt mittels 2 Tasten
Einstellparameter:	siehe Massbilder

Relais (Bestell.-Nr. 23)

Ausgang:	2 Relais, galvanisch getrennt 30W (max.1A), 36 VAC/ DC
Schaltzeit:	5...9999 ms, einstellbar
Schalthyserese:	typ. 1...99% d.S.

Transistor (Bestell.-Nr. 27)

Ausgang:	2 Transistoren, max. 0.5 A kurzschlussicher
Schaltzeit:	5...9999 ms, einstellbar
Schalthyserese:	typ. 1...99% d.S.

UMGEBUNGSBEDINGUNGEN

Betriebstemperatur:	-25...+80°C
Medientemperatur:	-40...+125°C
Schutzart:	¹⁾ min. IP65
Feuchtigkeit:	max. 95% relativ
Vibration:	10g (25...2000 Hz)
Schock:	50g/ 1 ms
Systemdruck:	max. 30 bar

EMV-SCHUTZ

(Ausgang: 4...20mA)

Emission:	EN/IEC 61000-6-3
Immunity:	EN/IEC 61000-6-2

MECHANISCHE DATEN

Material	
Sensor:	1.4542/1.4435 (AISI630/316L)
Gehäuse:	1.4301/1.4306 (AISI304/304L)
Dichtung (medienberührend):	NBR 70°Sh
Gerätestecker:	8-polig (PA)
	U _{max.} 30V AC/ 36V DC
Anziehdrehmoment:	25 Nm
Gewicht:	~ 200 g

SPÉCIFICATIONS

PRÉCISION

TEB @ -25...+80°C:	± 1.0 % E.M. typ.
Précision @ +25°C:	± 0.5 % E.M. typ.
CT point zéro et écart:	± 0.01 % E.M./K typ.
Stabilité à long terme	
1 année @ +25°C:	± 0.2 % E.M. typ.
Température de capteur:	±2.5°C (°F)

SPÉCIFICATIONS ÉLECTRIQUES

Signal de sortie/ Tension d'aliment.	
4...20 mA:	24 (11...32) VDC
0...10 VDC:	24 (15...30) VDC
Consommation courant:	< 70 mA
temps de réaction:	typ. 30 s/10...90% (0.2m/s,H2O)
Indication	
Affichage LCD:	rétro éclairé
Résolution 4 Digits:	≤ 0.2% E.M.
Domaine d'indication:	-5...125% E.M.
Programmation:	commande par menu avec 2 touches
Adjust. des paramètres:	voir cotes d'encombrement

Relais (No. commande 23)

Sortie:	2 Relais, isolés galvaniquement 30W (max.1A), 36 VAC/ DC
Temps de réponse:	5...9999 ms, ajustable
Hystérésis:	typ. 1...99% E.M.

Transistor (No. commande 27)

Sortie:	2 Transistors, max. 0.5 A protégé contre le court-circuit
Temps de réponse:	5...9999 ms, ajustable
Hystérésis:	typ. 1...99% E.M.

CONDITIONS D'ENVONNEMENT

Température de service:	-25...+80°C
Température de médias:	-40...+125°C
Protection:	¹⁾ min. IP65
Humidité:	95% max. relatif
Vibration:	10g (25...2000 Hz)
Choc:	50g/ 1 ms
Pression de système:	max. 30 bar

CEM PROTECTION

(Signal de sortie: 4...20mA)

Emission:	EN/CEI 61000-6-3
Immunité:	EN/CEI 61000-6-2

SPÉCIFICATIONS MÉCANIQUES

Matière	
Capteur:	1.4542/1.4435 (AISI630/316L)
Boîtier:	1.4301/1.4306 (AISI304/304L)
Joint (contact. de médias):	NBR 70°Sh
Embase mâle:	8-poles (PA)
	U _{max.} 30V AC/ 36V DC
Couple de serrage:	25 Nm
Poids:	~ 200 g

SPECIFICATIONS

ACCURACY

TEB @ -25...+80°C:	± 1.0 % FS typ.
Accuracy @ +25°C:	± 0.5 % FS typ.
TC zero point and span:	± 0.01 % FS/K typ.
Long term stability	
1 year @ +25°C:	± 0.2 % FS typ.
Sensor temperature:	±2.5°C (°F)

ELECTRICAL DATA

Output/ Supply voltage	
4...20 mA:	24 (11...32) VDC
0...10 VDC:	24 (15...30) VDC
Current consumption:	< 70 mA
Response time:	typ. 30 s/10...90% (0.2m/s,H2O)
Display	
LCD Display:	back-lit
4 Digits resolution:	≤ 0.2% FS
Indication range:	-5...125% FS
Operation:	menu selection with 2 buttons
Adjustment parameters:	see dimensions

Relays (Ordering No 23)

Output:	2 Relays, electrically isolated 30W (max.1A), 36 VAC/ DC
Switching time:	5...9999 ms, adjustable
Switching diff.:	typ. 1...99% FS

Transistor (Ordering No 27)

Output:	2 Transistors, max. 0.5 A short circuit proof
Switching time:	5...9999 ms, adjustable
Switching diff.:	typ. 1...99% FS

ENVIRONMENTAL CONDITIONS

Operating temperature:	-25...+80°C
Media temperature:	-40...+125°C
Protection:	¹⁾ min. IP65
Humidity:	max. 95% relative
Vibration:	10g (25...2000 Hz)
Shock:	50g/ 1 ms
System pressure:	max. 30 bar

EMC PROTECTION

(Output: 4...20mA)

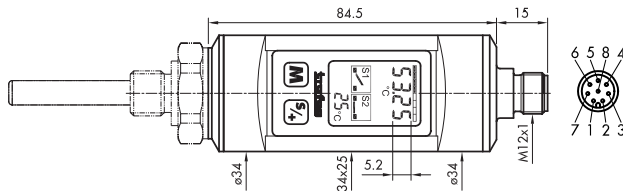
Emission:	EN/IEC 61000-6-3
Immunity:	EN/IEC 61000-6-2

MECHANICAL DATA

Material	
Sensor:	1.4542/1.4435 (AISI630/316L)
Housing:	1.4301/1.4306 (AISI304/304L)
Seal (media contacting):	NBR 70°Sh
Apparatus connector:	8-poles (PA)
	U _{max.} 30V AC/ 36V DC
Mounting torque:	25 Nm
Weight:	~ 200 g

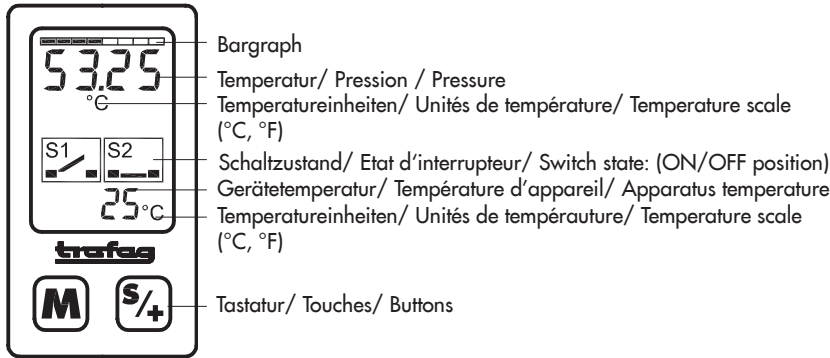
¹⁾ nur mit vorschriftsmässig montierter Kabeldose gültig/valable seulement avec fiche femelle montée selon instructions/provided female connector is mounted according to instructions

MASSBILDER / COTES D'ENCOMBREMENT / DIMENSIONS

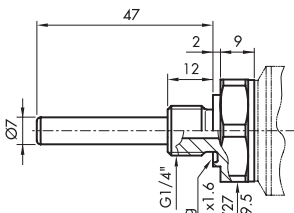


8164.XX **23** XX.XX.XX.XX

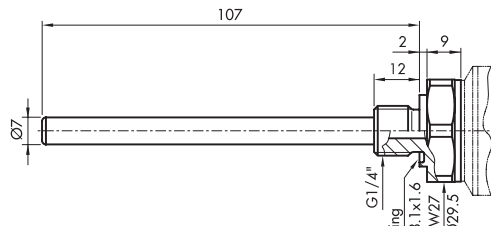
(1:1)



Einstellparameter/ Adjust. de paramètres/ Adjustment parameters

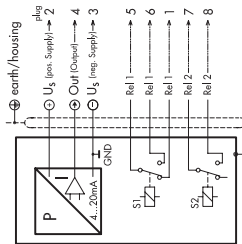


8164.XX **01** XX.XX.XX.XX



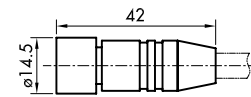
8164.XX **02** XX.XX.XX.XX

ELEKTRISCHER ANSCHLUSS / RACCORDÉMENT ÉLECTRIQUE / ELECTRICAL CONNECTION



4...20 mA / 2 relays

8164.XX.XXXX.XX **19.23**

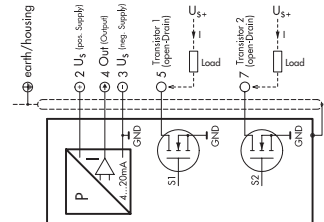


Länge/Longueur/Length: 2m
Material/Matériaux/ Material: PUR

- 1 = weiss/ blanc/ white
- 2 = braun/ brun/ brown
- 3 = grün/ vert/ green
- 4 = gelb/ jaune/ yellow
- 5 = grau/ gris/ grey
- 6 = rosa/ rose/ pink
- 7 = blau/ bleu/ blue
- 8 = rot/ rouge/ red

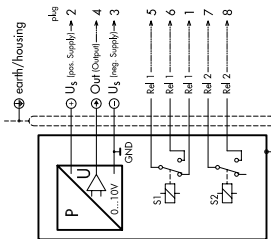
Abschirmung/ écran/ shield: an Mutter/ dans écrou/ on screw

DCS CON



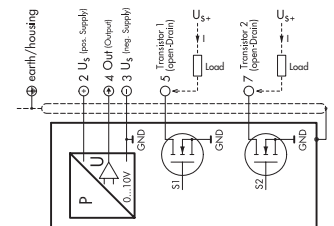
4...20 mA / 2 transistors (open drain)

8164.XX.XXXX.XX **19.27**



0...10 VDC / 2 relays

8164.XX.XXXX.XX **17.23**



0...10 VDC / 2 transistors (open drain)

8164.XX.XXXX.XX **17.27**

K 1bbYf 5i tca UH W9ei Jda Ybh7C "Z4B " Tel +, * +) , *%+(\$+\$, Fax +, * +) , *%+(\$+\$, www.k.blUi tte.com

ÄNDERUNGEN VORBEHALTEN - SOUS RÉSERVE DE MODIFICATIONS - SUBJECT TO CHANGE