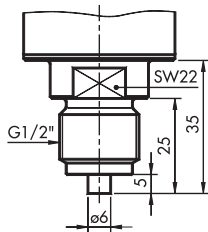
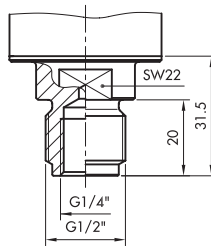




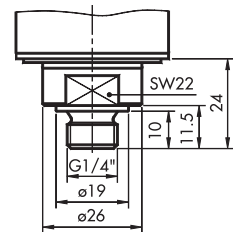
**DRUCKANSCHLÜSSE / CONNECTIONS DE PRESSION / PRESSURE CONNECTIONS**



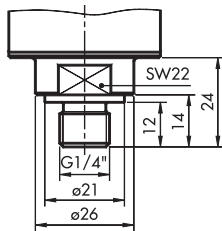
1.4435/1.4404<sup>1)</sup>: XXXX.XX **1000**.XX.XX.XX  
AlSi1MgMn<sup>2)</sup>: XXXX.XX **3000**.XX.XX.XX



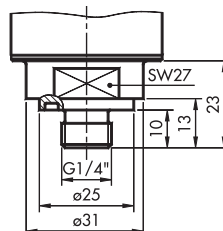
1.4435/1.4404<sup>1)</sup>: XXXX.XX **1015**.XX.XX.XX  
AlSi1MgMn<sup>2)</sup>: bitte fragen sie uns  
please ask us  
demandez-nous s.v.p



1.4435/1.4404<sup>1)</sup>: XXXX.XX **1200**.XX.XX.XX  
AlSi1MgMn<sup>2)</sup>: bitte fragen sie uns  
please ask us  
demandez-nous s.v.p

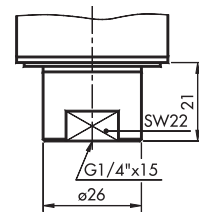


1.4435/1.4404<sup>1)</sup>: XXXX.XX **1210**.XX.XX.XX  
AlSi1MgMn<sup>2)</sup>: bitte fragen sie uns  
please ask us  
demandez-nous s.v.p



1.4435/1.4404<sup>1)</sup>: XXXX.XX **1300**.XX.XX.XX  
AlSi1MgMn<sup>2)</sup>: bitte fragen sie uns  
please ask us  
demandez-nous s.v.p

( $\phi 17.6 \times 2.4$ )<sup>3)</sup>



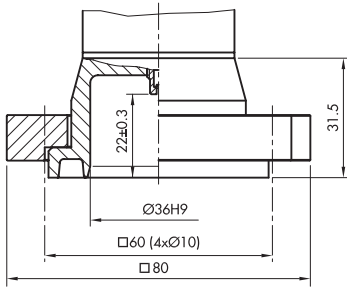
1.4435/1.4404<sup>1)</sup>: XXXX.XX **1500**.XX.XX.XX  
AlSi1MgMn<sup>2)</sup>: bitte fragen sie uns  
please ask us  
demandez-nous s.v.p

<sup>1)</sup> für/ pour/ for Type: 8715/25/35/45, 8716/26/36/46, 8718/28/38/48 Data sheet H72509, H72511, H72513

<sup>2)</sup> für/ pour/ for Type: 8716/26/36/46, Data sheet H72511

<sup>3)</sup> O-Ring Dimension

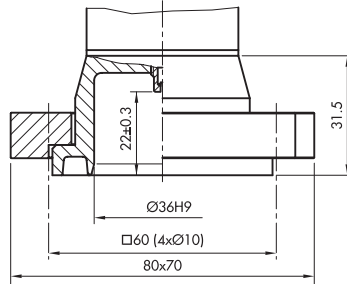
**DRUCKANSCHLÜSSE / CONNECTIONS DE PRESSION / PRESSURE CONNECTIONS**



( $\varnothing 40 \times 6$ )<sup>3)</sup>

1.4435/1.4404<sup>1)</sup>: XXXX.XX **2000**.XX.XX.XX

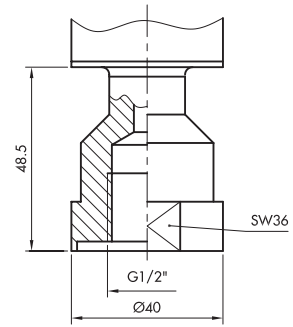
AlSi1MgMn<sup>2)</sup>: XXXX.XX **4000**.XX.XX.XX



( $\varnothing 40 \times 6$ )<sup>3)</sup>

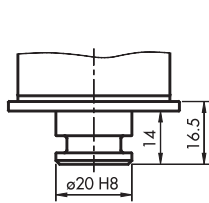
1.4435/1.4404<sup>1)</sup>: XXXX.XX **2001**.XX.XX.XX

AlSi1MgMn<sup>2)</sup>: bitte fragen sie uns  
please ask us  
demandez-nous s.v.p



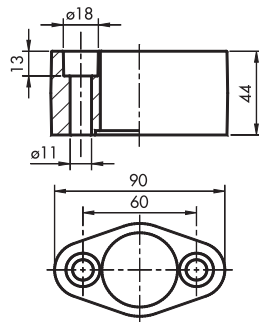
1.4435/1.4404<sup>1)</sup>: XXXX.XX **2010**.XX.XX.XX

AlSi1MgMn<sup>2)</sup>: bitte fragen sie uns  
please ask us  
demandez-nous s.v.p



( $\varnothing 12 \times 4$ )<sup>3)</sup>

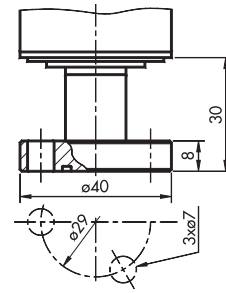
Nur/seulement/only:  
8711,8750,8751



Befestigungsflansch  
bride de fixation  
mounting flange

1.4435/1.4404<sup>1)</sup>: XXXX.XX **2100**.XX.XX.XX

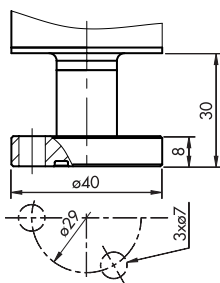
AlSi1MgMn<sup>2)</sup>: bitte fragen sie uns  
please ask us  
demandez-nous s.v.p



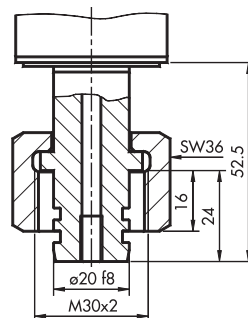
( $\varnothing 14.1 \times 1.6$ )<sup>3)</sup>

1.4435/1.4404<sup>1)</sup>: XXXX.XX **2200**.XX.XX.XX

AlSi1MgMn<sup>2)</sup>: XXXX.XX **4200**.XX.XX.XX



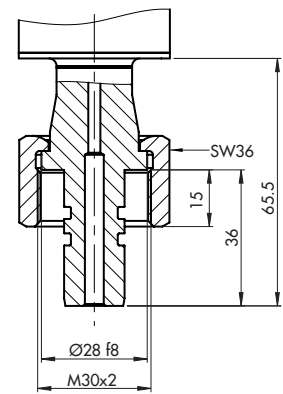
1.4435/1.4404<sup>1)</sup>: XXXX.XX **2220**.XX.XX.XX



( $\varnothing 15.3 \times 2.4$ )<sup>3)</sup>

1.4435/1.4404<sup>1)</sup>: XXXX.XX **2300**.XX.XX.XX

AlSi1MgMn<sup>2)</sup>: XXXX.XX **4300**.XX.XX.XX

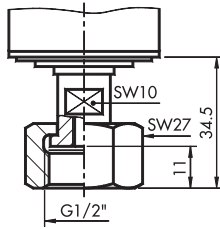


1.4435/1.4404<sup>1)</sup>: XXXX.XX **2350**.XX.XX.XX

<sup>1)</sup> für/ pour/ for Type: 8715/25/35/45, 8716/26/36/46, 8718/28/38/48 Data sheet H72509, H72511, H72513

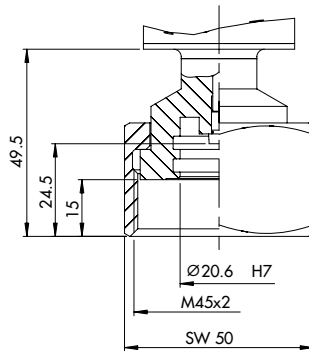
<sup>2)</sup> für/ pour/ for Type: 8716/26/36/46, Data sheet H72511

<sup>3)</sup> O-Ring Dimension



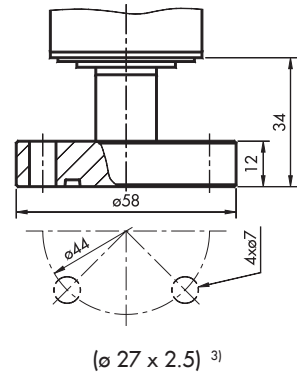
1.4435/1.4404<sup>1)</sup>: XXXX.XX **2500** .XX.XX.XX

AlSi1MgMn<sup>2)</sup>: bitte fragen sie uns  
please ask us  
demandez-nous s.v.p



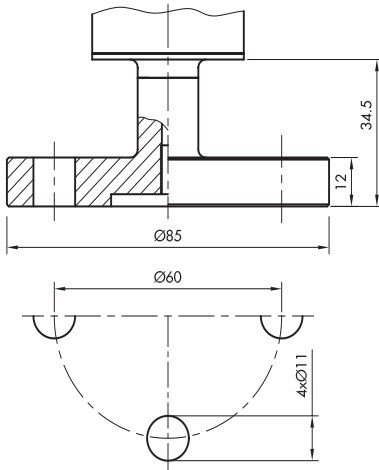
1.4435/1.4404<sup>1)</sup>: XXXX.XX **2570** .XX.XX.XX

for Dilo DM 20



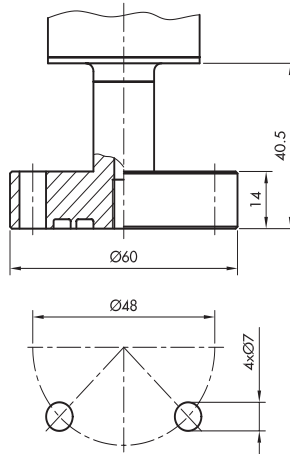
1.4435/1.4404<sup>1)</sup>: XXXX.XX **2600** .XX.XX.XX

AlSi1MgMn<sup>2)</sup>: bitte fragen sie uns  
please ask us  
demandez-nous s.v.p



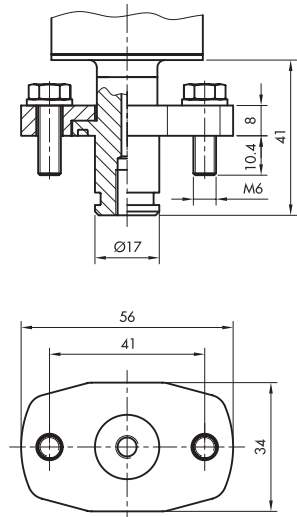
1.4435/1.4404<sup>1)</sup>: XXXX.XX **2620** .XX.XX.XX

AlSi1MgMn<sup>2)</sup>: XXXX.XX **4620** .XX.XX.XX



1.4435/1.4404<sup>1)</sup>: XXXX.XX **2700** .XX.XX.XX

AlSi1MgMn<sup>2)</sup>: XXXX.XX **4700** .XX.XX.XX



1.4435/1.4404<sup>1)</sup>: XXXX.XX **2800** .XX.XX.XX

AlSi1MgMn<sup>2)</sup>: XXXX.XX **4800** .XX.XX.XX



Trafag entwickelt und produziert auch speziell auf Ihre Bedürfnisse zugeschnittene Produkte. Bitte fragen Sie uns an.  
Trafag développe et fabrique des produits adaptés à vos besoins spécifiques en se basant sur votre cahier des charges. Contactez-nous s.v.p.  
Trafag develops and manufactures customer-engineered products according to your specifications to meet your requirements. Please contact us.

<sup>1)</sup> für/ pour/ for Type: 8715/25/35/45, 8716/26/36/46, 8718/28/38/48 Data sheet H72509, H72511, H72513

<sup>2)</sup> für/ pour/ for Type: 8716/26/36/46, Data sheet H72511

<sup>3)</sup> O-Ring Dimension