

Power PCB Relay RT1 Inrush

1 pole 16 A, for inrush peak currents up to 80 A



- 1 N/O contact
- Sensitive coil 400 mW
- 5 kV / 10 mm coil-contact
- Protection class II (VDE 0700)
- Ambient temperature 85°C
- Height 15.7 mm
- Sockets with PCB-type or screw-type terminals

Applications
Domestic appliances, heating control, lighting control

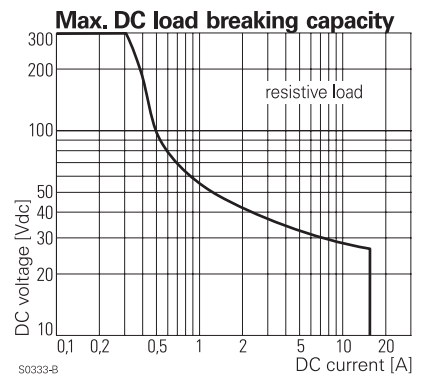
F0177-B



Technical data of approved types on request

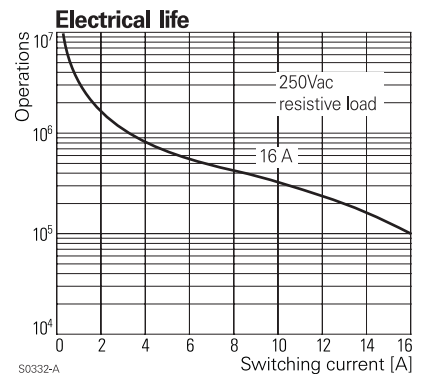
Contact data

Configuration	1 N/O contact
Type of contact	single contact
Rated current	16 A
Rated voltage / max. breaking voltage AC	250 Vac / 440 Vac
Maximum breaking capacity AC	4000 VA
Make current (max. 4 s at duty cycle 10%)	30 A
peak inrush current (20 ms)	80 A
Contact material	AgNi 90/10



Contact life

Type	Load	Operations
RT33K	1000 W, 250 Vac, incandescent lamps	typ. 9x10 ⁴



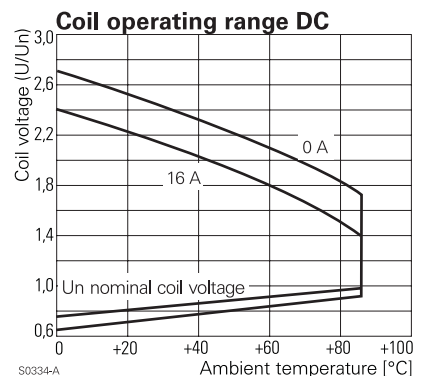
Coil data

Nominal voltage	5...110 Vdc
Nominal coil power	400 mW
Operate category	2 / b

Coil versions, DC-coil

Coil code	Nominal voltage Vdc	Pull-in voltage Vdc	Release voltage Vdc	Maximum voltage Vdc	Coil resistance Ω	Coil current mA
012	12	8.4	1.2	30.6	360±10%	33.3
024	24	16.8	2.4	61.2	1440±10%	16.7
048	48	33.6	4.8	122.4	5520±10%	8.7
060	60	42.0	6.0	153.0	7340±12%	8.1

All figures are given for coil without preenergization, at ambient temperature +20°C
Other coil voltages on request



Power PCB Relay RT1 Inrush

1 pole 16 A, for inrush peak currents up to 80 A

Insulation

Dielectric strength	coil-contacts	5000 V _{rms}
	open contact circuit	1000 V _{rms}
Clearance / creepage		10 / 10 mm
Insulation to IEC 664/VDE 0110 (1/89)		
	Voltage rating	250 V
	Pollution degree	3
	Overvoltage category	III
Insulation to VDE 0110b (2/79)		
	Insulation category / reference voltage	C / 250

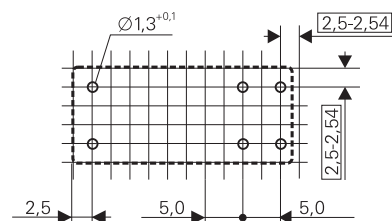
Other data

Flammability class UL	V-0
Ambient temperature	-40...+85 °C
Mechanical life	30x10 ⁶ operations
Max. switching rate at rated- / minimum load	6 min ⁻¹ / 1200 min ⁻¹
Operate- / release time	typ. 8 / 3 ms
Bounce time	typ. 2 ms
Vibration resistance	20 g, 30...500 Hz
Shock resistance (destruction)	100 g
Protection category	IP 40
Relay weight	14 g
Packaging unit	20 / 500 pcs.
Accessories	see accessories RT

PCB layout / terminal assignment

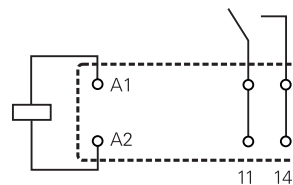
View on solder pins
Dimensions in mm

16 A, pinning 5 mm



S0163-CT

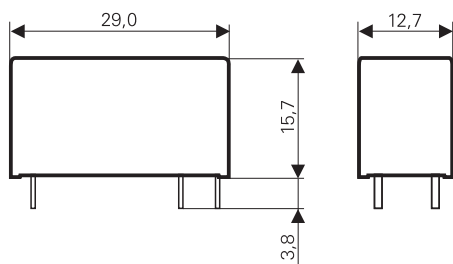
1 N/O contact



S0163-BF

Dimensions

Dimensions in mm



S0272-AE

Ordering key

Type

Version

3 16 A, pinning 5 mm

Contacts

3 1 N/O contact

Contact material

K AgNi 90/10 **L** AgSnO

Coil

Coil code: please refer to coil versions table, preferred types in bold print

