

新产品

SUNSTAR传感与控制 <http://www.sensor-ic.com/> TEL:0755-83376489 FAX:0755-83376182E-MAIL: szss20@163.com

NEW

# LC复合EMI滤波器阵列LCA14、LCA24系列 (便携式终端 信号线用)

# CHIP TYPE LC EMI FILTER ARRAY LCA14,LCA24 SERIES For Signal Line

LC复合EMI滤波器阵列LCA14、LCA24系列是高性能EMI滤波器阵列，适用于便携式终端RF频带的降噪。是内置4个LC多级电路的三端子型阵列，衰减系数大、除噪频带宽，适用于信号线的高频降噪。

The LC EMI filter array, LCA14, LCA24 series, is highly effective to the noise filtering for the RF frequency band of a mobile phone. 4 LC circuits of 3 terminal type are enclosed. It is suitable for high frequency noise filtering because of its large attenuation coefficient and deep wide noise removal band.

### ■特点

- 超小型阵列产品，适用于高密度信号线。
- 在800MHz~2GHz的频带范围内具有很好的噪声衰减效果。
- 急剧的衰减特性，适用于高频信号线。
- 备有各种静电容量值的产品。
- 低静电容量型。

### ■Features

- Ultra miniature and low profile and suitable for high density circuit lines.
- Large attenuation in the frequency range 800MHz to 2GHz
- Steep insertion loss and suitable for high speed signal line.
- Products of different capacitance values are available.
- smaller capacitance

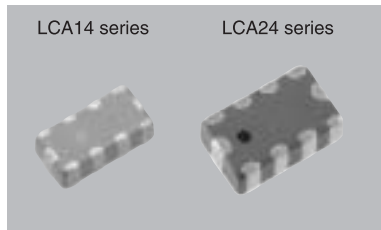
### ■用途

- 移动电话、数字影像设备

### ■Applications

- For mobile phones and digital AV equipments

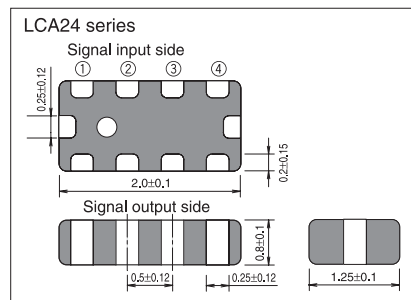
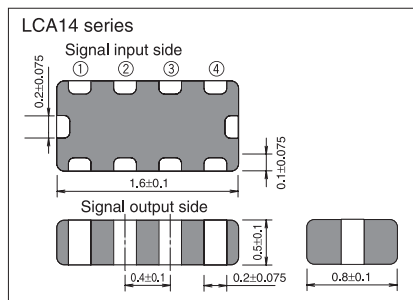
新产品



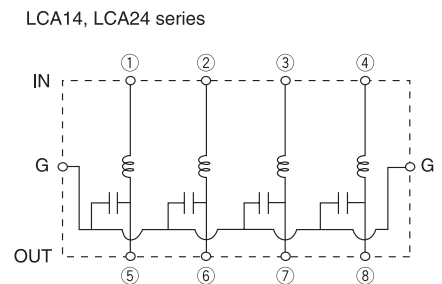
### ■型号构成 Part number system

LCA	14	-	2A	1A	194	M	T	28
系列名 Series LCA: 低电容产品 Low Cap.	形状 Size 14: 1.6×0.8mm 24: 2.0×1.25mm 4线阵列		额定电流 Rated current 2A: 100mA	额定电压 Rated voltage 1A: 10V	断开频率 Cut-off frequency 190MHz	断开频率容限 Cut-off frequency tolerance M: ±20%	包装形式 Packing form T: 带装 Taping B: 散装 Bulk	静电容量 28: 28pF

### ■形状·尺寸(mm) Dimensions (mm)



### ■等效电路 Equivalent circuits

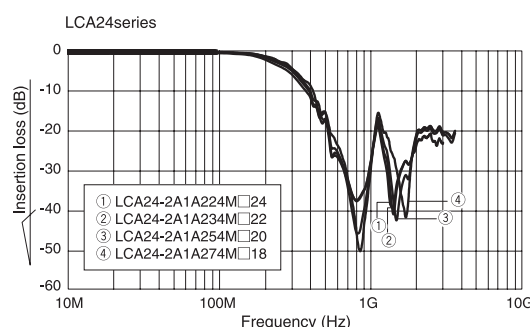
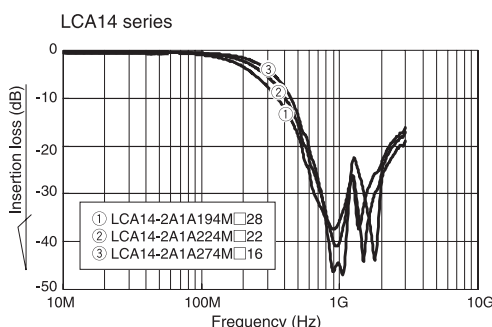


### ■型号一览表 Part number list

型号 Part number	断开频率 Cut-off frequency	断开频率容许偏差 Cut-off frequency tolerance	额定电压 Rated voltage	额定电流 Rated current	绝缘阻抗 Insulation Resistance	静电容量 Capacitance (参考值Reference)	使用温度范围 Operating Temp. range
LCA14-2A1A194M□28	190MHz	±20%	10V	100mA	10MΩmin.	28pF±15%	-40°C ~ +85°C
LCA14-2A1A224M□22	220MHz					22pF±15%	
LCA14-2A1A274M□16	270MHz					16pF±15%	
LCA24-2A1A224M□24	220MHz					24pF±15%	
LCA24-2A1A234M□22	230MHz					22pF±15%	
LCA24-2A1A254M□20	250MHz					20pF±15%	
LCA24-2A1A274M□18	270MHz					18pF±15%	

□: T为带装、B为散装  
□: "T" stands for taping package and "B" stands for bulk package.

### ■插入损失特性(参考) Insertion loss (Reference)



SUNSTAR自动化 <http://www.sensor-ic.com/> TEL: 0755-83376489 FAX:0755-83376182 E-MAIL: szss20@163.com

MITSUBISHI MATERIALS CORPORATION