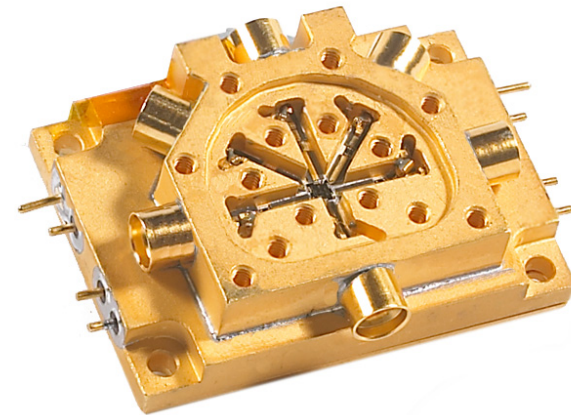


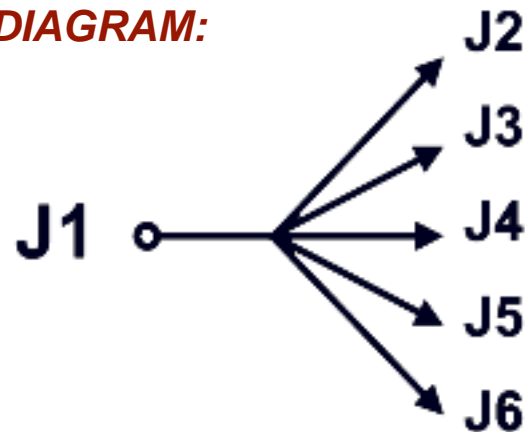
SP5T SWITCH

KEY SPECIFICATIONS:

- Frequency Range: 2 -18 GHz
- Switching Speed: 50 ns typ
- Isolation: 60 dB typ
- Insertion Loss: 3 dB max
- VSWR: 2:1 max
- Type: Reflective



BLOCK DIAGRAM:

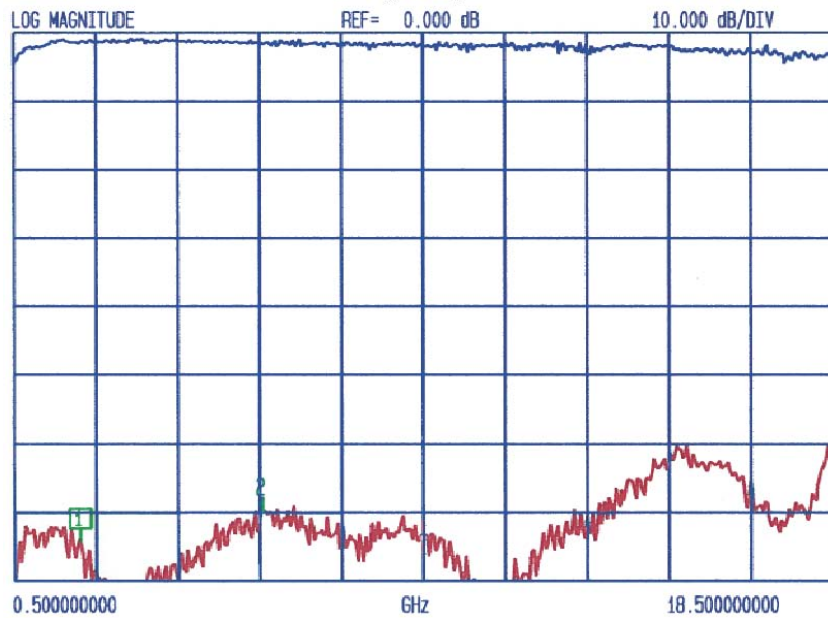


SP5T SWITCH

TYPICAL PERFORMANCE

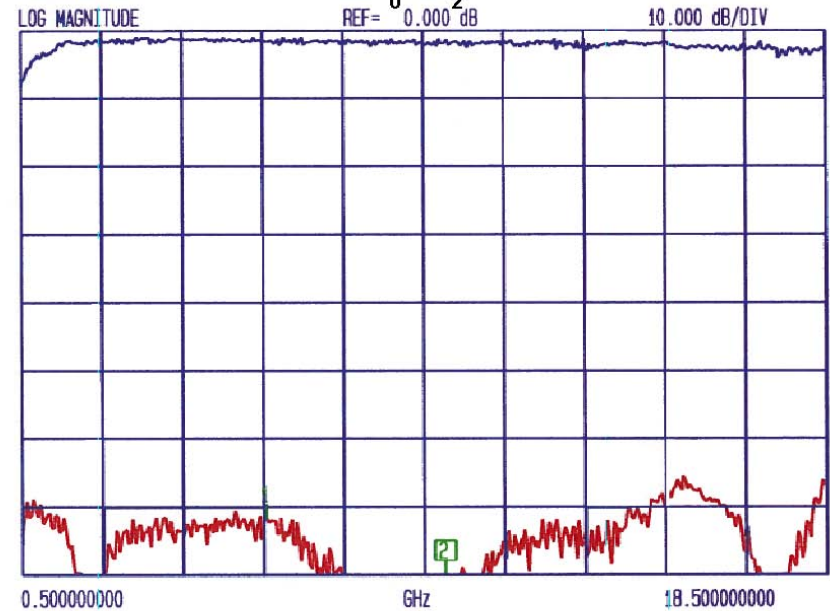
Insertion and Isolation

$$J_0 - J_1$$



Insertion Loss and Isolation

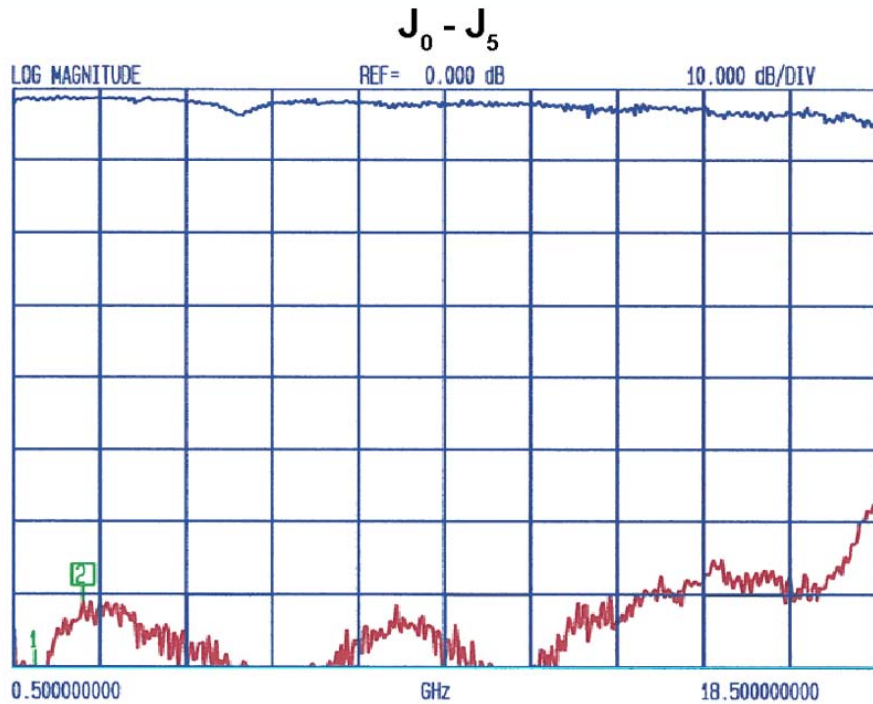
$$J_0 - J_2$$



SP5T SWITCH

TYPICAL PERFORMANCE

Insertion Loss and Isolation



Insertion Loss and VSWR

