

## 01190 Series

### SOCKET EXTENSION TORQUE SENSOR

These strain gage-based sensors are designed for static and limited rotation torque measurement applications, such as drive socket systems, calibration of hand and click wrenches, and checking applied torque values. They are available in ten capacities. All use a full, four-arm Wheatstone Bridge circuit and have an elastomer coating to protect against mechanical damage. SDI's Auto-ID connector is optional.



### SPECIFICATIONS

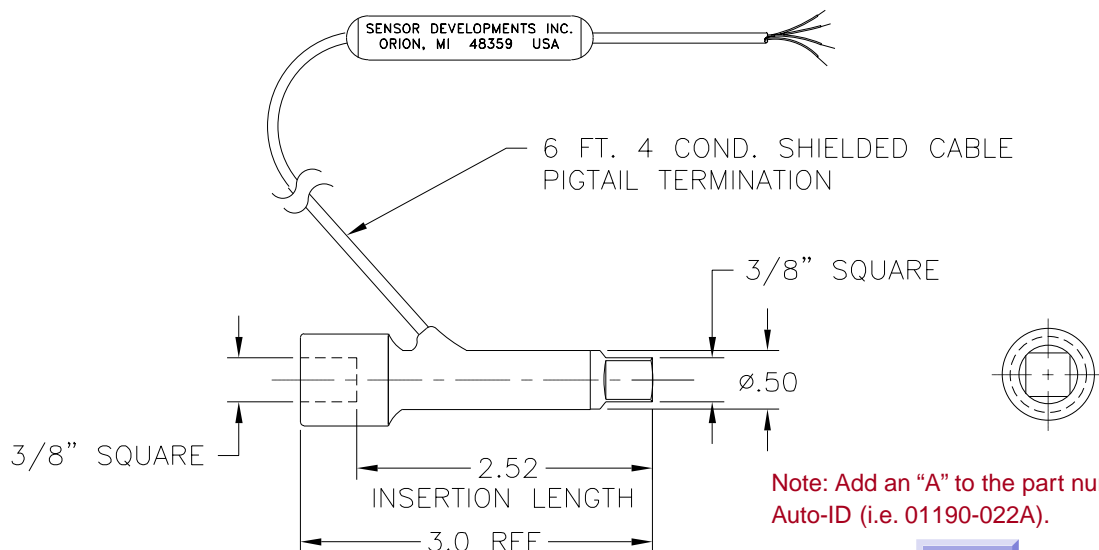
Capacity..... 25 in.lb. to 7,000 ft.lb. (See chart)  
 Overload capacity..... 150% of F.S.  
 Output at F.S..... See chart  
 Non-linearity..... 0.10% of F.S.  
 Hysteresis..... 0.10% of F.S.  
 Zero balance..... 1.00% of F.S.  
 Compensated temperature..... 70 to 170°F  
 Useable temperature..... -65 to +250°F  
 Temperature effect on zero..... 0.002% of F.S./°F  
 Temperature effect on span..... 0.002% of Rdg./°F  
 Bridge resistance..... 1000 Ohms  
 Excitation voltage, maximum..... 20 Vdc  
 Material..... Alloy Steel

### DIMENSIONS

MODEL	CAPACITY			DRIVE	TYPE	A	B	C	OUTPUT
	IN LB	FT LB	NM			IN	IN	IN	NOM.
01190-250	25	2	3	1/4	Square	3.0	1/2	.44	1.00
01190-051	50	4	6						2.00
01190-121	125	10	14						1.50
01190-022	200	17	22	3/8		.70	0.50	3.00	
01190-062	600	50	68	1/2		3.5	.97		0.75
01190-152	1500	125	170					3/4	
01190-242	2400	200	271	1		1.74	1.65		2.20
01190-063	6000	500	680					1 1/2	
01190-123	12000	1000	1355	2.80					
01190-843	84000	7000	9490						

### OPTIONAL DISPLAY UNITS INCLUDE:

- PMAC 2000, Model 90222
- PTI, peak track instrument, Model 90323



Note: Add an "A" to the part number for Auto-ID (i.e. 01190-022A).

DWG