

90061

WELD PROBE FORCE GAGE

Model 90061 is a self contained, portable measurement system which allows auditing of the pinch force generated between the electrodes of resistance spot welders. Resistance welding uses a pair of electrodes to clamp two base metals firmly together prior to and during application of electrical current. Poorly clamped parts result in a defective joint. A correctly clamped assembly aids in reducing the resistance in the joint and allows the current flow to properly heat the base metals to weld the part.



SPECIFICATIONS

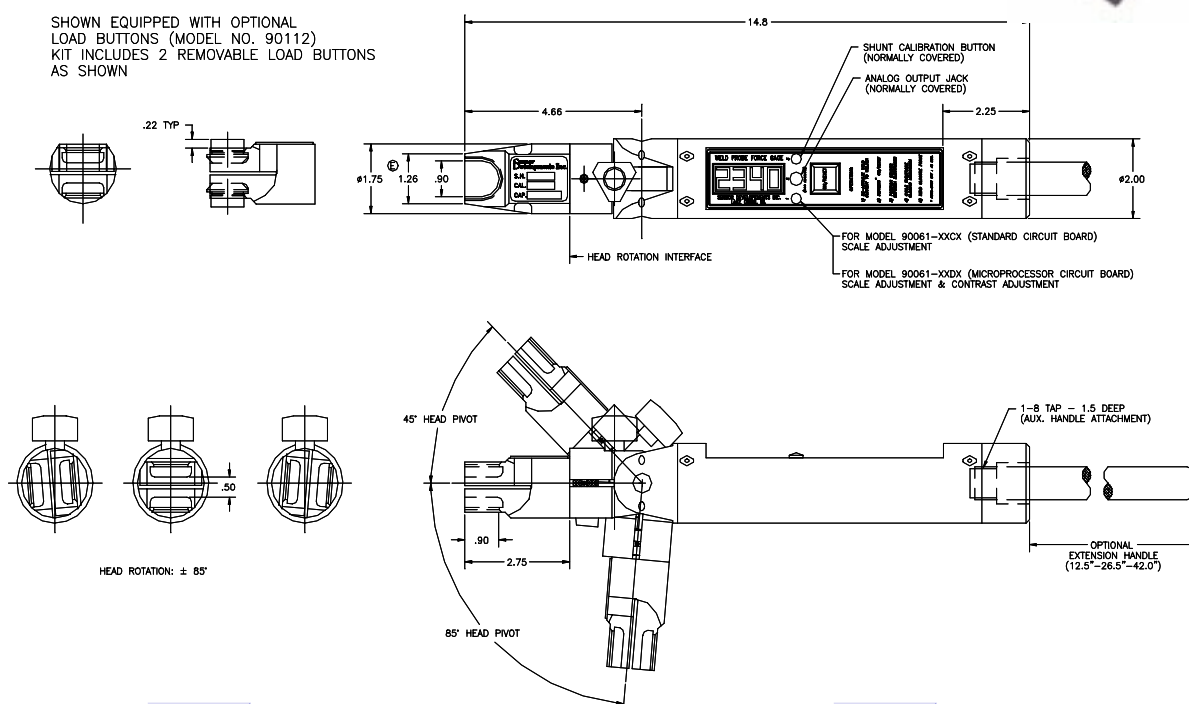
Capacity (lbs)	300, 1K, 3K, 5K, 10K
Overload capacity	150% of F.S.
Display	4 digits standard
Accuracy	0.5% of F.S.
Weight.....	4.0 lbs
Battery life.....	50 hours continuous use
Battery type.....	AA size alkaline
Analog output.....	0 to 4.5V dc

FEATURES

- Rotating and pivoting beryllium copper sensor head for optimum assessability
- Single button operation
- Optional two-piece construction

CUSTOM DESIGNS:

- Projection tip sensing element.



DWG

1 klbs/3klbs Version

DWG

5klbs/10klbs Version