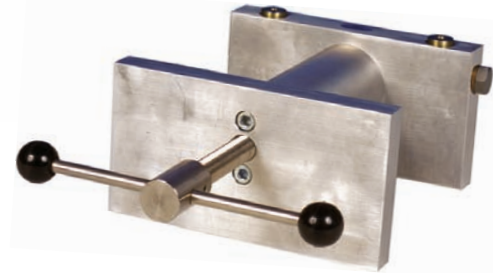
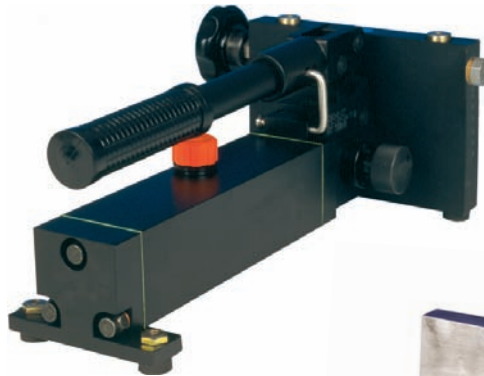


Manual Pumps

Series 7106

Code:	7106 EN
Delivery:	ex stock
Warranty:	24 months



7106 EN

Application

Manual pumps are used to generate pressure and vacuum, thus allowing mechanical and electronic pressure measuring instruments to be checked through comparative measurements, adjusted and calibrated.

Application fields where these pressure measurements are particularly valuable include:

- ▶ Power stations
- ▶ Chemical industry
- ▶ Refineries
- ▶ Machine building
- ▶ Servicing shops etc.

Depending on the calibration range, a manual pump, a spindle pump or a lever pump are used to generate the pressure. The pressurized medium may consist of air, water or oil.

The range of pressures extends from vacuum up to 1000 bar.

Each pump has a pressure drop rate typical for its type. This may be up to 3 % of its maximum pressure value within five minutes and depends, among other things, on the medium, the temperature and on the volume of the cylinder.

Manual Pumps Series 7106

Technical Data

Model	7106-V0690	7106-V0034/V2910	7106-V0007	7106-V1830/1840/1850
Figure				
Functional Principle	hand pump	hand pump	pneumatic pump	hand pump
Producible Pressure	0 bar ... 690 bar	-0.85 bar ... / -0.96 bar ... 34 bar / 34 bar	-0.85 bar ... 7 bar	0 bar... / 0 bar... / -0.85 bar... 2 bar / 15 bar / 0 bar
Pressure Medium	mostly all pressure fluids, oil and water	air	air	air
Pressure Connection	2 x 1/4" internal	1/4" NPT internal 1/8" NPT internal	1/8" NPT internal	1/4 NPT (hose clip)
Medium Contacting Parts		aluminium (nickel plated) brass stainless steel Nylon		aluminium brass stainless steel Nylon Nylatron GS
Delivery Volume / Stroke	-	-	-	2.6 ml / 6.3 ml / 2.6 ml
Reservoir	-	-	-	-
Volume Fine Adjustment	standard	standard	standard	standard
Discharge Valve	standard	standard	standard	standard

Model	7106-V2820	7106-V3016	7106-V4014	7106-V5001
Figure				
Functional Principle	hand pump	spindle pump	lever pump	lever pump
Producible Pressure	0 bar ... 200 bar	0 bar ... 350 bar	0 bar ... 700 bar	0 bar ... 1000 bar
Pressure Medium	oil	oil	oil	oil / water / alcohol
Pressure Connection	1/4 NPT	1/4 BSP	1/4 BSP	1/4 or 1/2 NPT, 7/16 UNF
Medium Contacting Parts	aluminium brass stainless steel Lexan	aluminium brass stainless steel	aluminium brass stainless steel	aluminium Monel Buna-N
Delivery Volume / Stroke	2.5 ml	28 ml	0.09 ml	0.4 ml (fine) / 3.2 ml (rough)
Reservoir	230 ml	300 ml (option)	470 ml	940 ml
Volume Fine Adjustment	standard	optional	standard	standard
Discharge Valve	standard	optional (only with reservoir)	standard	standard

Adapter set for hand pumps

Model 7106-Z1191

1 x 1/4" BSP to 1/8" BSP F
1 x 1/4" BSP to 3/8" BSP F
1 x 1/4" BSP to 1/2" BSP F
1 set O-rings
Teflon tape

Model 7106-Z1192

1 x 1/4" BSP to 1/8" NPT F
1 x 1/4" BSP to 1/4" NPT F
1 x 1/4" BSP to 3/8" NPT F
1 x 1/4" BSP to 1/2" NPT F
1 set O-rings
Teflon tape